

# SEC23IP antibody

Catalog Number: 115078

## Product name

SEC23IP antibody

IP: 1:500-1:5000

IHC: 1:20-1:200

## Specificity

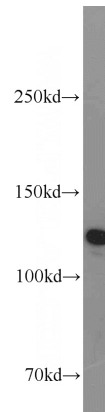
Human, Mouse, Rat; other species not tested.

IF: 1:20-1:200

## Antibody description

SEC23IP Rabbit Polyclonal antibody. Positive IP detected in HeLa cells. Positive WB detected in HeLa cells. Positive IF detected in HeLa cells. Positive IHC detected in human heart tissue, human liver tissue. Observed molecular weight by Western-blot: 125 kDa

## Validations



## Preparation

This antibody was obtained by immunization of SEC23IP recombinant protein (Accession Number: XM\_047424537). Purification method: Antigen affinity purified.

HeLa cells were subjected to SDS PAGE followed by western blot with Catalog No:115078(SEC23IP antibody) at dilution of 1:1000

## Formulation

PBS with 0.02% sodium azide and 50% glycerol pH 7.3.

## Storage

Store at -20°C. DO NOT ALIQUOT

## Clonality

Polyclonal

## Ig Type

Rabbit IgG

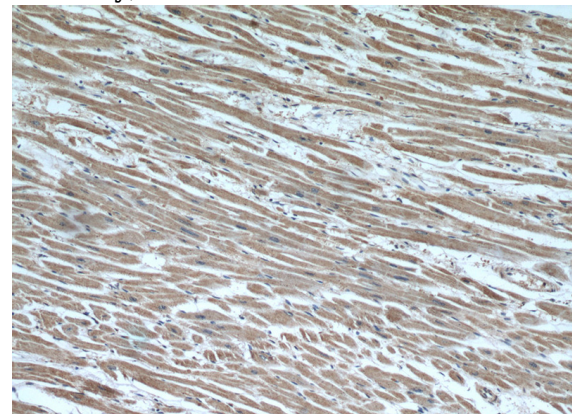
## Applications

ELISA, WB, IHC, IF, IP

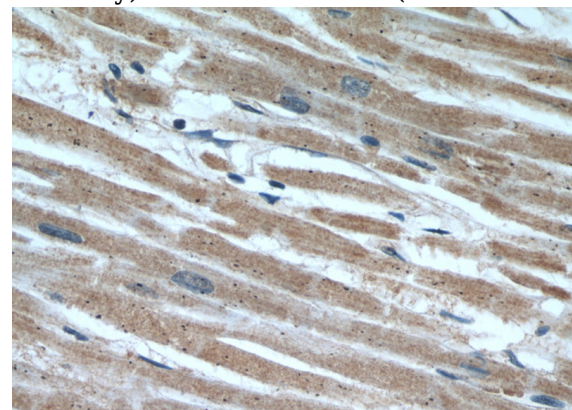
## Dilutions

Recommended Dilution:

WB: 1:500-1:5000



Immunohistochemical of paraffin-embedded human heart using Catalog No:115078(SEC23IP antibody) at dilution of 1:50 (under 10x lens)

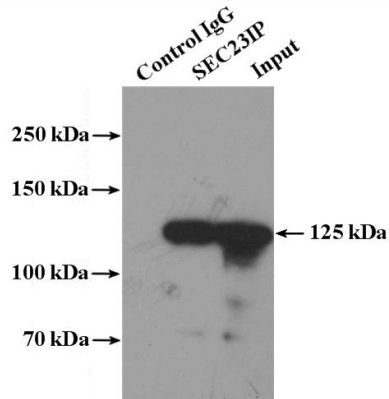


# SEC23IP antibody

Catalog Number: 115078

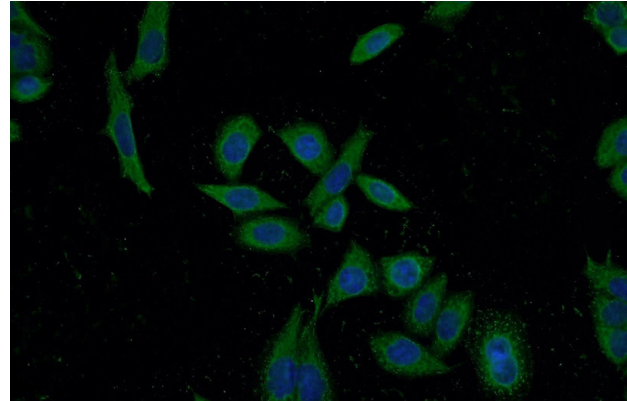
---

Immunohistochemical of paraffin-embedded human heart using Catalog No:115078(SEC23IP antibody) at dilution of 1:50 (under 40x lens)



IP Result of anti-SEC23IP (IP:Catalog No:115078, 4ug; Detection:Catalog No:115078 1:1000) with

HeLa cells lysate 3600ug.



Immunofluorescent analysis of HeLa cells using Catalog No:115078(SEC23IP Antibody) at dilution of 1:50 and Alexa Fluor 488-conjugated AffiniPure Goat Anti-Rabbit IgG(H+L)