

# Anti-COTL1 (4E11) Mouse antibody



Catalog Number: 168368

## Product name

Anti-COTL1 (4E11) Mouse antibody

## Specificity

Human

## Antibody description

COTL1 (4E11) Mouse monoclonal antibody

## Preparation

Antigen: Purified recombinant fragment of human COTL1 expressed in E. Coli.

## Formulation

Purified antibody in PBS with 0.05% sodium azide

## Storage

Store at 4°C short term. Store at -20°C long term. Avoid freeze / thaw cycle.

## Clonality

Monoclonal

## Ig Type

Mouse IgG1

## Applications

WB, IHC-P

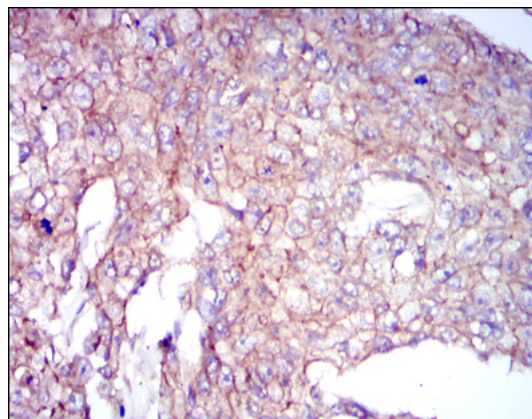
## Dilutions

WB: 1/500 - 1/2000

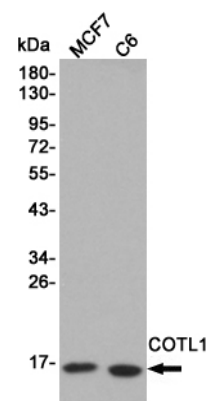
IHC: 1/200 - 1/1000

ELISA: 1/10000

## Validations

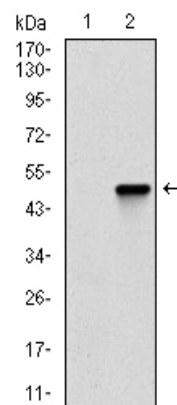


Immunohistochemical analysis of paraffin-embedded breast cancer tissues using COTL1



mouse mAb with DAB staining.

Western blot detection of COTL1 in MCF7 and C6 cell lysates using COTL1 mouse mAb (1:1000 diluted). Predicted band size: 16KDa. Observed



band size: 16KDa.

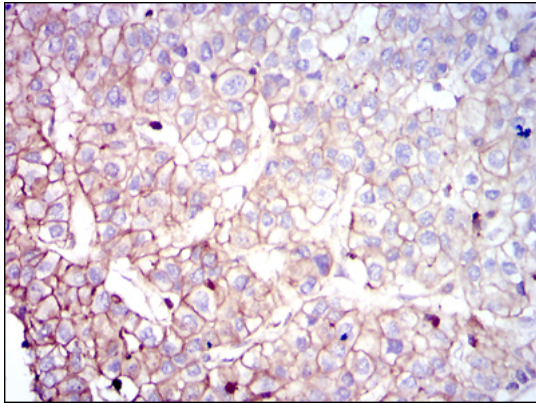
Western blot analysis using COTL1 mAb against HEK293 (1) and COTL1 (AA: 1-142)-hIgGfc transfected HEK293 (2) cell lysate.

# Anti-COTL1 (4E11) Mouse antibody



Catalog Number: 168368

---



Immunohistochemical analysis of paraffin-embedded liver cancer tissues using COTL1 mouse mAb with DAB staining.