

# Anti-Chk2 Rabbit antibody



Catalog Number: 167368

## Product name

Anti-Chk2 Rabbit antibody

WB: 1/5000-1/10000

IHC: 1/20-1/100

## Specificity

Human

ICC/IF: 1/50

FC: 1/20

## Antibody description

Chk2 Rabbit polyclonal antibody

IP: 1/20-1/50

## Validations

## Preparation

Antigen: Recombinant protein of human Chk2

## Formulation

Supplied in 50nM Tris-Glycine(pH 7.4), 0.15M NaCl, 40%Glycerol, 0.01% sodium azide and 0.05% BSA.

## Storage

Store at -20°C. Stable for 12 months from date of receipt.

## Clonality

Polyclonal

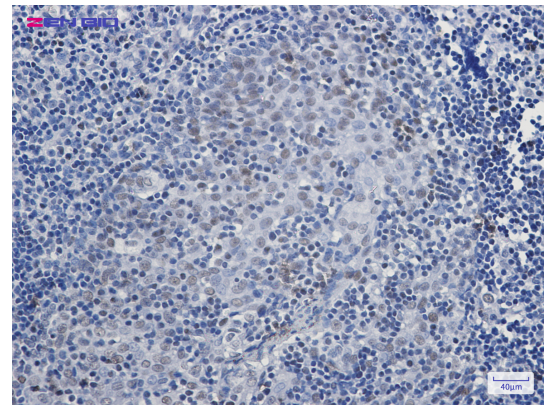
## Ig Type

Rabbit IgG

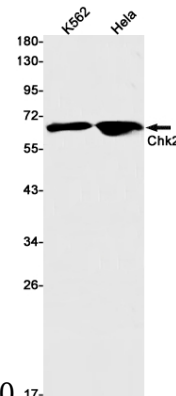
## Applications

WB, IHC-P, ICC/IF, FC, IP

## Dilutions



Immunohistochemistry of Chk2 in paraffin-embedded Human tonsil using Chk2 Rabbit pAb at



dilution 1/20

Western blot detection of Chk2 in K562, HeLa cell lysates using Chk2 Rabbit pAb(1:1000 diluted). Predicted band size: 61 kDa. Observed band size: 61 kDa.