

# NuMA antibody

Catalog Number: 113368

---

**Product name**

NuMA antibody

**Specificity**

Human, Mouse, Rat; other species not tested.

**Antibody description**

NuMA Rabbit Polyclonal antibody. Positive WB detected in HeLa cells. Observed molecular weight by Western-blot: 238 kDa

**Preparation**

This antibody was obtained by immunization of NuMA recombinant protein (Accession Number: BC013023). Purification method: Antigen affinity purified.

**Formulation**

PBS with 0.02% sodium azide and 50% glycerol pH 7.3.

**Storage**

Store at -20°C. DO NOT ALIQUOT

**Clonality**

Polyclonal

**Ig Type**

Rabbit IgG

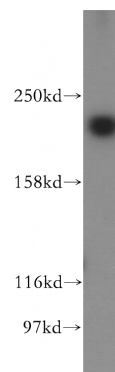
**Applications**

ELISA, WB

**Dilutions**

Recommended Dilution:

WB: 1:200-1:1000

**Validations**

HeLa cells were subjected to SDS PAGE followed by western blot with Catalog No:113368(NUMA1 antibody) at dilution of 1:300