

MAD2L1BP antibody



Catalog Number: 112368

Product name

MAD2L1BP antibody

IHC: 1:20-1:200

IF: 1:20-1:200

Specificity

Human, Mouse, Rat; other species not tested.

Antibody description

MAD2L1BP Rabbit Polyclonal antibody. Positive IF detected in A431 cells. Positive IHC detected in human skin tissue, human colon tissue. Positive WB detected in HeLa cells, K-562 cells. Observed molecular weight by Western-blot: 34kd

Preparation

This antibody was obtained by immunization of MAD2L1BP recombinant protein (Accession Number: NM_014628). Purification method: Antigen affinity purified.

Formulation

PBS with 0.1% sodium azide and 50% glycerol pH 7.3.

Storage

Store at -20°C. DO NOT ALIQUOT

Clonality

Polyclonal

Ig Type

Rabbit IgG

Applications

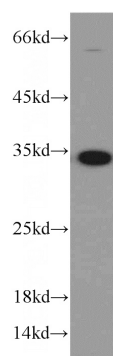
ELISA, WB, IHC, IF

Dilutions

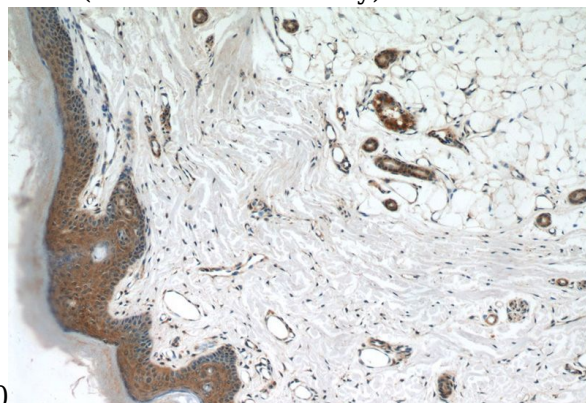
Recommended Dilution:

WB: 1:200-1:2000

Validations

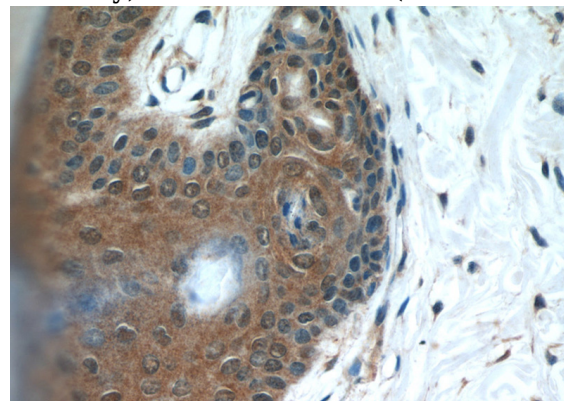


HeLa cells were subjected to SDS PAGE followed by western blot with Catalog No:112368(MAD2L1BP antibody) at dilution of



1:800

Immunohistochemical of paraffin-embedded human skin using Catalog No:112368(MAD2L1BP antibody) at dilution of 1:50 (under 10x lens)



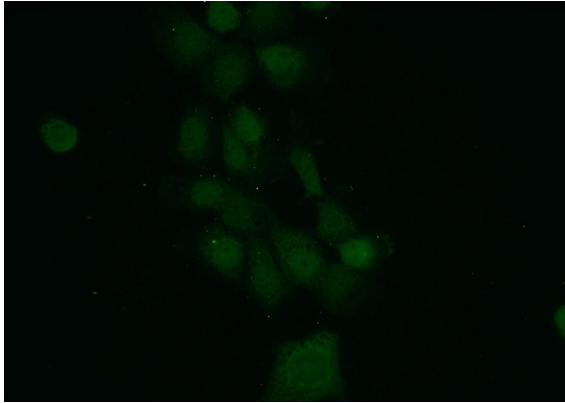
Immunohistochemical of paraffin-embedded

MAD2L1BP antibody



Catalog Number: 112368

human skin using Catalog No:112368(MAD2L1BP antibody) at dilution of 1:50 (under 40x lens)



Immunofluorescent analysis of A431 cells using Catalog No:112368(MAD2L1BP Antibody) at dilution of 1:50 and Alexa Fluor 488-conjugated AffiniPure Goat Anti-Rabbit IgG(H+L)