

# Cyclin H antibody



Catalog Number: 109668

## Product name

Cyclin H antibody

Recommended Dilution:

WB: 1:500-1:5000

## Specificity

Human, Mouse, Rat; other species not tested.

IP: 1:500-1:5000

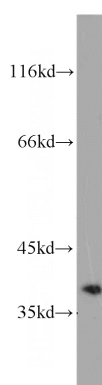
IHC: 1:20-1:200

## Antibody description

Cyclin H Rabbit Polyclonal antibody. Positive IP detected in HeLa cells. Positive WB detected in A375 cells, A431 cells, HeLa cells, Jurkat cells, K-562 cells, mouse brain tissue, NIH/3T3 cells. Positive FC detected in SH-SY5Y cells. Positive IHC detected in human ovary tumor tissue. Positive IF detected in SH-SY5Y cells. Observed molecular weight by Western-blot: 38 kDa

IF: 1:20-1:200

## Validations



## Preparation

This antibody was obtained by immunization of Cyclin H recombinant protein (Accession Number: NM\_001239). Purification method: Antigen affinity purified.

A375 cells were subjected to SDS PAGE followed by western blot with Catalog No:109668(CCNH antibody) at dilution of 1:1000

## Formulation

PBS with 0.1% sodium azide and 50% glycerol pH 7.3.

## Storage

Store at -20°C. DO NOT ALIQUOT

## Clonality

Polyclonal

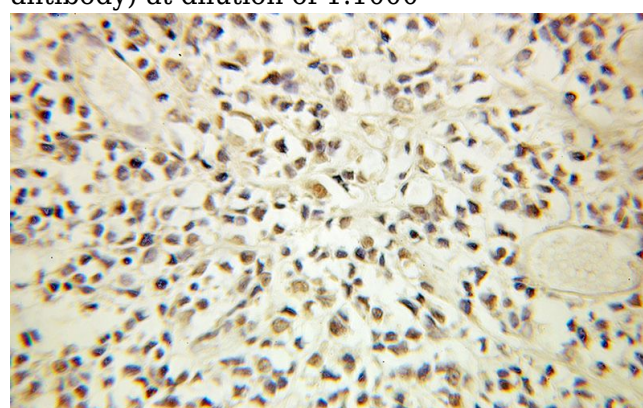
## Ig Type

Rabbit IgG

## Applications

ELISA, WB, IHC, IF, FC, IP

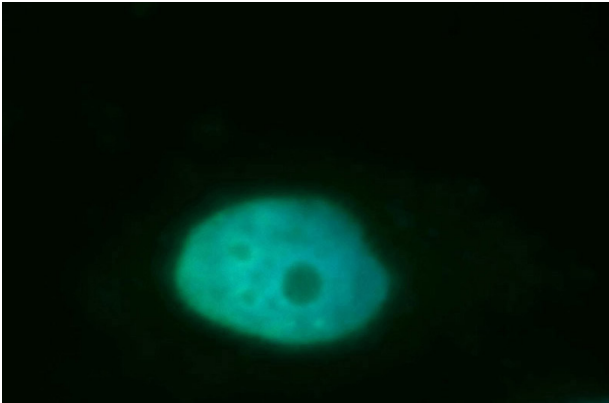
## Dilutions



Immunohistochemical of paraffin-embedded human ovary tumor using Catalog No:109668(CCNH antibody) at dilution of 1:100 (under 10x lens)

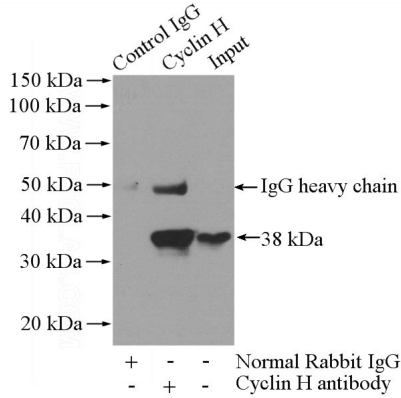
# Cyclin H antibody

Catalog Number: 109668

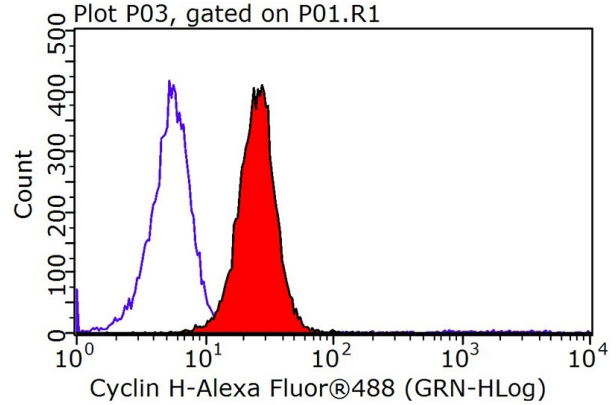


Immunofluorescent analysis of SH-SY5Y cells, using CCNH antibody Catalog No:109668 at 1:50 dilution and FITC-labeled donkey anti-rabbit IgG(green). Blue pseudocolor = DAPI (fluorescent

DNA dye).



IP Result of anti-CCNH (IP:Catalog No:109668, 4ug; Detection:Catalog No:109668 1:1000) with HeLa cells lysate 1200ug.



1X10<sup>6</sup> SH-SY5Y cells were stained with 0.2ug CCNH antibody (Catalog No:109668, red) and control antibody (blue). Fixed with 90% MeOH blocked with 3% BSA (30 min). Alexa Fluor 488-conjugated AffiniPure Goat Anti-Rabbit IgG(H+L) with dilution 1:100.