

Human PKLR/PK1/PKL (His tag) recombinant protein



Catalog Number: 518668

General Information

Gene Name Synonym

Pyruvate Kinase Isozymes R/L, Pyruvate Kinase 1, R-Type/L-Type Pyruvate Kinase, Red Cell/Liver Pyruvate Kinase, PKLR, PK1, PKL

Protein Construction

A DNA sequence encoding the Human PKLR/PK1/PKL Met1-Ser574 is expressed with a 6His tag at the C-terminus.

Organism

Human

Expression Host

Human Cells

QC Testing

Purity

>95% as determined by SDS-PAGE.

Endotoxin

<1.0 EU per µg protein as determined by the LAL method.

Stability

Store for up to 6 months at -20°C

Formulation

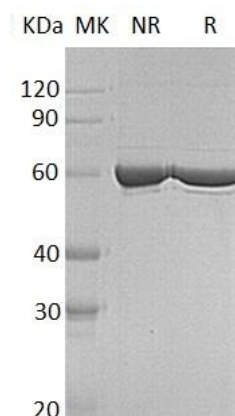
Supplied as a 0.2 µm filtered solution of 20mM Tris-HCl, 1mM DTT 0.2M NaCl, 10% glycerol, pH 8.0.

Usage Guide

Storage

Store at <-20°C, minimize freeze-thaw cycles.

SDS-PAGE



Human PKLR/PK1/PKL (His tag) recombinant protein