

# Anti-SULT1B1 antibody



Catalog Number: 103668

## Product name

Anti-SULT1B1 antibody

## Immunogen

[Human SULT1B1 \(His Tag\) recombinant protein](#)

## Specificity

Human SULT1B1

## Antibody description

Rabbit polyclonal to SULT1B1

## Preparation

Produced in rabbits immunized with purified, recombinant Human SULT1B1 (rh SULT1B1; NP\_055280.2; Leu 2-Ile 296). SULT1B1 specific IgG was purified by Human SULT1B1 affinity chromatography.

## Formulation

0.2 µm filtered solution in PBS with 5% trehalose

## Storage

This antibody can be stored at 2°C-8°C for one month without detectable loss of activity. Antibody products are stable for twelve months from date of receipt when stored at -20°C to -80°C.

Preservative-Free.

Sodium azide is recommended to avoid contamination (final concentration 0.05%-0.1%). It is toxic to cells and should be disposed of properly. Avoid repeated freeze-thaw cycles.

## Clonality

Polyclonal

## Ig Type

Rabbit IgG

## Applications

ELISA, IHC-P

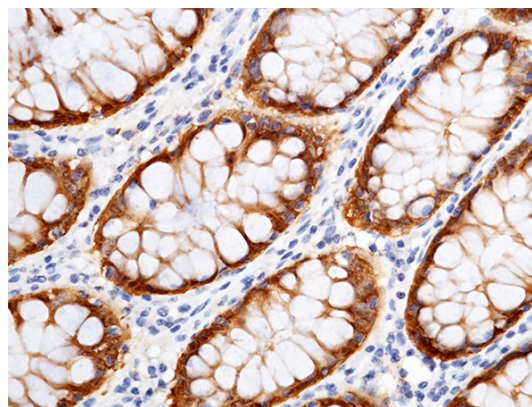
## Dilutions

ELISA: 0.1-0.2 µg/mL

This antibody can be used at 0.1-0.2 µg/mL with the appropriate secondary reagents to detect Human SULT1B1. The detection limit for Human SULT1B1 is approximately 0.00245 ng/well.

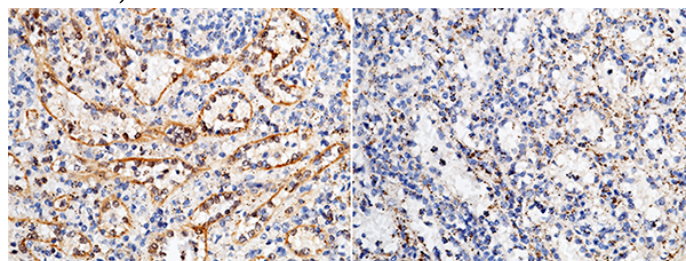
IHC-P: 0.1-1 µg/mL

## Validations



SULT1B1 Antibody, Rabbit PAb, Antigen Affinity Purified, Immunohistochemistry

Immunochemical staining of human SULT1B1 in human colon with rabbit polyclonal antibody (1 µg/mL, formalin-fixed paraffin embedded sections).



SULT1B1 Antibody	+	+
SULT1B1 Antigen	-	+

SULT1B1 Antibody, Rabbit PAb, Antigen Affinity Purified, Immunohistochemistry

Immunochemical staining of human SULT1B1 in human spleen with rabbit polyclonal antibody (1 µg/mL, formalin-fixed paraffin embedded

# Anti-SULT1B1 antibody



Catalog Number: 103668

---

sections). The left panel: tissue incubated with primary antibody; The right panel: tissue

incubated with the mixture of primary antibody and antigen (recombinant protein).