

MKP-2 antibody

Catalog Number: 112668

Product name

MKP-2 antibody

Specificity

Human, Mouse, Rat; other species not tested.

Antibody description

MKP-2 Rabbit Polyclonal antibody. Positive IHC detected in human pancreas cancer tissue. Positive WB detected in mouse brain tissue, A549 cells, HepG2 cells, mouse skin tissue, RAW264.7 cells, SMMC-7721 cells. Observed molecular weight by Western-blot: 50kd

Preparation

This antibody was obtained by immunization of MKP-2 recombinant protein (Accession Number: NM_001394). Purification method: Antigen affinity purified.

Formulation

PBS with 0.1% sodium azide and 50% glycerol pH 7.3.

Storage

Store at -20°C. DO NOT ALIQUOT

Clonality

Polyclonal

Ig Type

Rabbit IgG

Applications

ELISA, IHC, WB

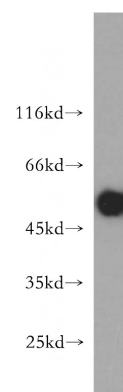
Dilutions

Recommended Dilution:

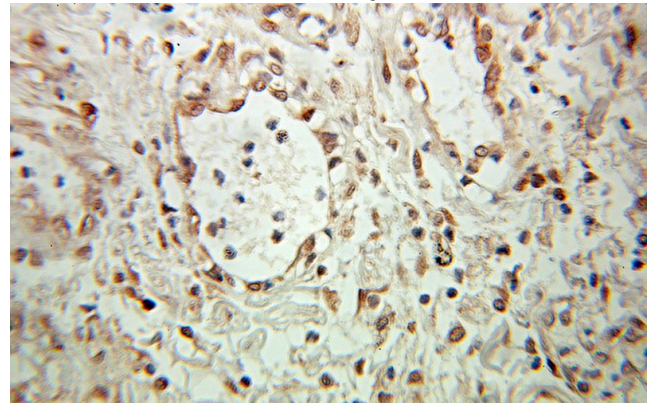
WB: 1:200-1:2000

IHC: 1:20-1:200

Validations



mouse brain tissue were subjected to SDS PAGE followed by western blot with Catalog No:112668(MKP-2 antibody) at dilution of 1:500



Immunohistochemical of paraffin-embedded human pancreas cancer using Catalog No:112668(MKP-2 antibody) at dilution of 1:100 (under 10x lens)