

# CEP170L antibody



Catalog Number: 109268

## Product name

CEP170L antibody

## Specificity

Human, Mouse, Rat; other species not tested.

## Antibody description

CEP170L Rabbit Polyclonal antibody. Positive WB detected in mouse testis tissue, rat testis tissue. Positive IF detected in Hela cells. Observed molecular weight by Western-blot: 38-42 kDa

## Preparation

This antibody was obtained by immunization of CEP170L recombinant protein (Accession Number: BC014590). Purification method: Antigen affinity purified.

## Formulation

PBS with 0.1% sodium azide and 50% glycerol pH 7.3.

## Storage

Store at -20°C. DO NOT ALIQUOT

## Clonality

Polyclonal

## Ig Type

Rabbit IgG

## Applications

ELISA, IF, WB

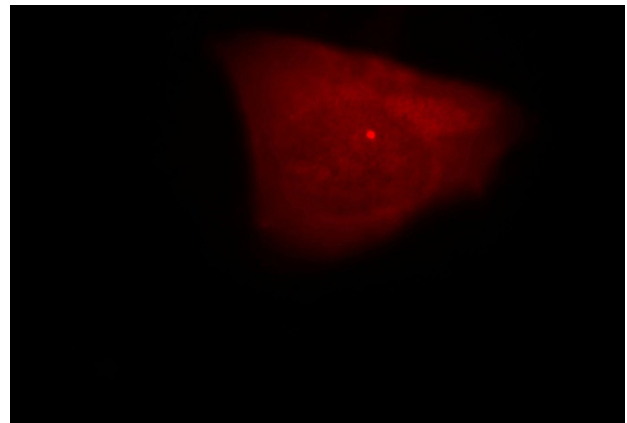
## Dilutions

Recommended Dilution:

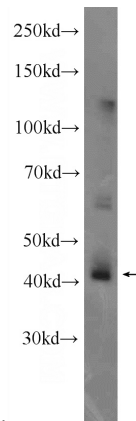
WB: 1:500-1:5000

IF: 1:10-1:100

## Validations



Immunofluorescent analysis of Hela cells, using CEP170L antibody Catalog No:109268 at 1:25 dilution and Rhodamine-labeled goat anti-rabbit



IgG (red).

mouse testis tissue were subjected to SDS PAGE followed by western blot with Catalog No:109268(CEP170L Antibody) at dilution of 1:1000