

# Human IGF1/IBP1 recombinant protein



Catalog Number: 518268

## General Information

### Gene Name Synonym

Insulin-Like Growth Factor I, IGF-I, Mechano Growth Factor, MGF, Somatomedin-C, IGF1, IBP1

### Protein Construction

A DNA sequence encoding the Human IGF1/IBP1 Gly49-Ala118 is expressed.

### Organism

Human

### Expression Host

E. coli

## QC Testing

### Purity

>95% as determined by SDS-PAGE.

### Endotoxin

<0.5 EU per  $\mu\text{g}$  protein as determined by the LAL method.

### Stability

Store for up to 12 months at  $-20^{\circ}\text{C}$  to  $-80^{\circ}\text{C}$  as lyophilized powder. Aliquots of reconstituted samples are stable at  $-20^{\circ}\text{C}$  for 3 months.

### Formulation

Lyophilized from a  $0.2\ \mu\text{m}$  filtered solution of  $300\text{mM}$  NaAc, pH 6.5.

## Usage Guide

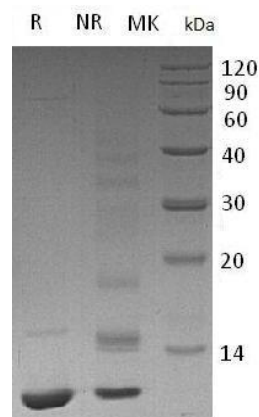
### Storage

Lyophilized protein should be stored at  $<-20^{\circ}\text{C}$ , though stable at room temperature for 3 weeks. Reconstituted protein solution can be stored at  $4-7^{\circ}\text{C}$  for 2-7 days.

### Reconstitution

Always centrifuge tubes before opening. Do not mix by vortex or pipetting. It is recommended to reconstitute to a concentration of  $0.25\ \mu\text{g}/\text{ml}$ . Dissolve the lyophilized protein in  $50\text{mM}$  Acetic acid. Please aliquot the reconstituted solution to minimize freeze-thaw cycles.

## SDS-PAGE



Human IGF1/IBP1 recombinant protein