

# Human CXCL12 / SDF-1 beta (isoform a) recombinant protein



Catalog Number: 503268

## General Information

### Gene Name Synonym

C-X-C motif chemokine 12; Intercrine reduced in hepatomas; Pre-B cell growth-stimulating factor; SDF-1-beta(3-72); SDF-1-alpha(3-67)

### Protein Construction

A DNA sequence encoding the human CXCL12 isoform alpha (P48061-2) (Lys 22-Lys 89) was expressed and purified.

### Organism

Human

### Expression Host

E. coli

## QC Testing

### Purity

> 97 % as determined by SDS-PAGE

### Endotoxin

Please contact us for more information.

### Stability

Samples are stable for up to twelve months from date of receipt at -70°C

### Predicted N terminal

Lys 22

### Molecular Mass

The recombinant human CXCL12 consists of 68 amino acids and predicts a molecular mass of 8 KDa.

### Formulation

Lyophilized from sterile PBS, pH 7.4  
1. 5 % trehalose and mannitol are added as protectants before lyophilization.  
2. Please contact us for any concerns or special requirements.

## Usage Guide

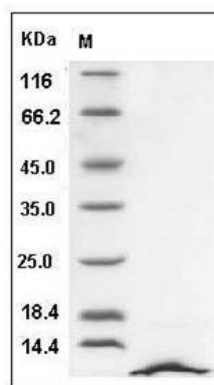
### Storage

Store it under sterile conditions at -20°C to -80°C. It is recommended that the protein be aliquoted for optimal storage. Avoid repeated freeze-thaw cycles.

### Reconstitution

Adding sterile water, prepare a stock solution of 0.25 mg/ml. Concentration is measured by UV-Vis.

### SDS-PAGE



Human CXCL12 / SDF-1 Protein (isoform a) SDS-PAGE