

## General Information

### Gene Name Synonym

Metastatic lymph node gene 19 protein; Proto-oncogene Neu; Proto-oncogene c-ErbB-2; Tyrosine kinase-type cell surface receptor HER2; p185erbB2

### Protein Construction

A DNA sequence encoding the human ERBB2 (NP\_004439.2) (Met1-Thr652) was expressed with five amino acids (DDDDK) at the C-terminus.

### Organism

Human

### Expression Host

Human Cells

## QC Testing

### Purity

> 95 % as determined by SDS-PAGE.

### Endotoxin

< 1.0 EU per  $\mu\text{g}$  protein as determined by the LAL method.

### Stability

Samples are stable for up to twelve months from date of receipt at  $-70^{\circ}\text{C}$

### Predicted N terminal

Thr 23

## Molecular Mass

The recombinant human ERBB2 consists 636 amino acids and predicts a molecular mass of 70 kDa.

### Formulation

Lyophilized from sterile PBS, pH 7.4.

1. 5 % trehalose and mannitol are added as protectants before lyophilization.

2. Please contact us for any concerns or special requirements.

## Usage Guide

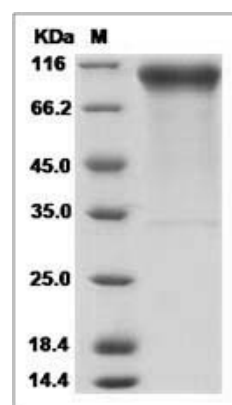
### Storage

Store it under sterile conditions at  $-20^{\circ}\text{C}$  to  $-80^{\circ}\text{C}$ . It is recommended that the protein be aliquoted for optimal storage. Avoid repeated freeze-thaw cycles.

### Reconstitution

Adding sterile water, prepare a stock solution of 0.25 mg/ml. Concentration is measured by UV-Vis.

### SDS-PAGE



Human HER2 / ErbB2 Protein