

# S1PR1/EDG1 antibody

Catalog Number: 114968

## Product name

S1PR1/EDG1 antibody

## Specificity

Human, Mouse; other species not tested.

## Antibody description

S1PR1/EDG1 Rabbit Polyclonal antibody. Positive IP detected in mouse brain tissue. Positive WB detected in mouse brain tissue, SH-SY5Y cells. Observed molecular weight by Western-blot: 45-50 kDa

## Preparation

This antibody was obtained by immunization of Peptide (Accession Number: NM\_001400). Purification method: Antigen affinity purified.

## Formulation

0.1M NaHCO<sub>3</sub>, 0.1M glycine, 0.02% sodium azide and 50% glycerol pH 7.3.

## Storage

Store at -20°C. DO NOT ALIQUOT

## Clonality

Polyclonal

## Ig Type

Rabbit IgG

## Applications

ELISA, WB, IP

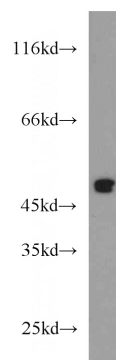
## Dilutions

Recommended Dilution:

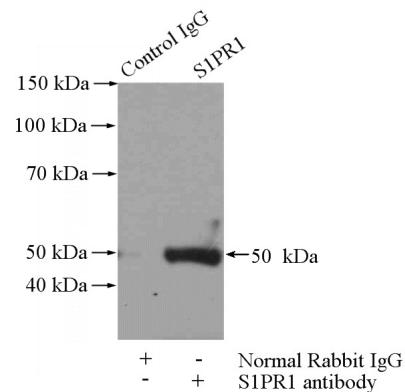
WB: 1:200-1:2000

IP: 1:200-1:1000

## Validations



mouse brain tissue were subjected to SDS PAGE followed by western blot with Catalog No:114968(S1PR1 antibody) at dilution of 1:200



IP Result of anti-S1PR1 (IP:Catalog No:114968, 4ug; Detection:Catalog No:114968 1:300) with mouse brain tissue lysate 2640ug.