

# PLK1-phospho(S326) antibody



Catalog Number: 113968

## Product name

PLK1-phospho(S326) antibody

## Specificity

Human, Mouse, Rat; other species not tested.

## Antibody description

PLK1-phospho(S326) Rabbit Polyclonal antibody.  
Positive IHC detected in human colon tissue.  
Positive WB detected in MCF-7 cells. Observed molecular weight by Western-blot: 66 kDa

## Preparation

This antibody was obtained by immunization of Peptide (Accession Number: NM\_005030).  
Purification method: Antigen affinity purified.

## Formulation

PBS with 0.1% sodium azide and 50% glycerol pH 7.3.

## Storage

Store at -20°C. DO NOT ALIQUOT

## Clonality

Polyclonal

## Ig Type

Rabbit IgG

## Applications

ELISA, IHC, WB

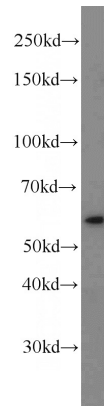
## Dilutions

Recommended Dilution:

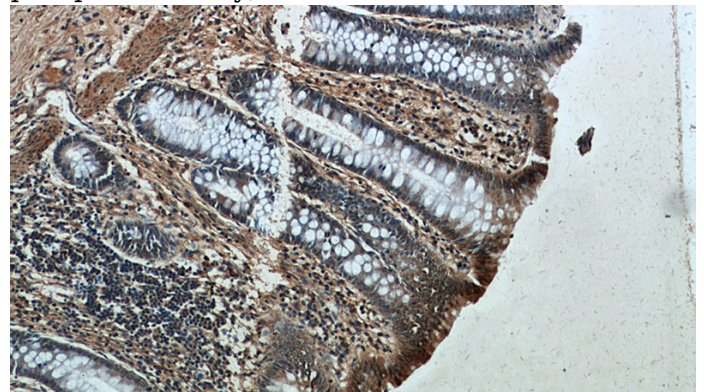
WB: 1:200-1:1000

IHC: 1:20-1:200

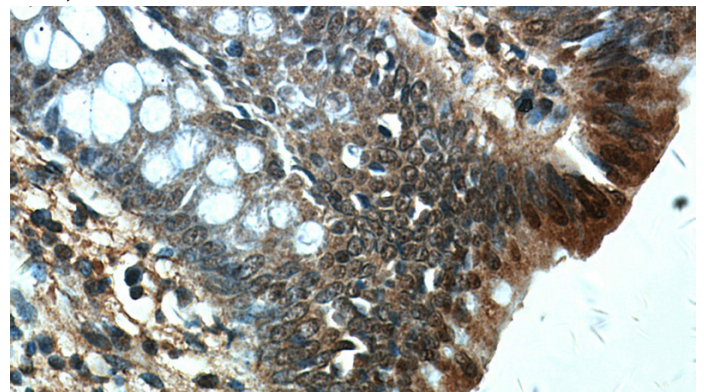
## Validations



MCF7 cells were subjected to SDS PAGE followed by western blot with Catalog No:113968(PLK1-phospho antibody) at dilution of 1:200



Immunohistochemical of paraffin-embedded human colon using Catalog No:113968(PLK1-phospho antibody) at dilution of 1:50 (under 10x lens)



Immunohistochemical of paraffin-embedded human colon using Catalog No:113968(PLK1-phospho antibody) at dilution of 1:50 (under 40x lens)