

# Human Complement component 7 (His Tag) recombinant protein



Catalog Number: 503968

## General Information

### Protein Construction

A DNA sequence encoding the human C7 (P10643) (Met1-Gln843) with a C-terminal polyhistidine tag was expressed.

### Organism

Human

### Expression Host

Human Cells

## QC Testing

### Purity

> 88 % as determined by SDS-PAGE

### Endotoxin

< 1.0 EU per  $\mu\text{g}$  of the protein as determined by the LAL method

### Stability

Samples are stable for up to twelve months from date of receipt at  $-70^{\circ}\text{C}$

### Predicted N terminal

Ser 23

### Molecular Mass

The recombinant human C7 comprises 832 amino acids and has a predicted molecular mass of 92.6 kDa. The apparent molecular mass of the protein

is approximately 92-98 kDa in SDS-PAGE under reducing conditions.

### Formulation

Lyophilized from sterile PBS, pH 7.4

1. 5 % trehalose and mannitol are added as protectants before lyophilization.

2. Please contact us for any concerns or special requirements.

## Usage Guide

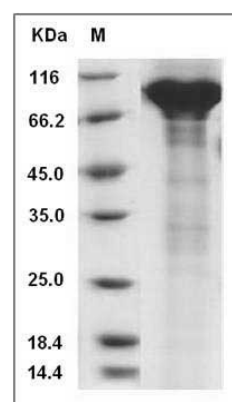
### Storage

Store it under sterile conditions at  $-20^{\circ}\text{C}$  to  $-80^{\circ}\text{C}$ . It is recommended that the protein be aliquoted for optimal storage. Avoid repeated freeze-thaw cycles.

### Reconstitution

Adding sterile water, prepare a stock solution of 0.25 mg/ml. Concentration is measured by UV-Vis.

### SDS-PAGE



Human C7 / Complement component 7 Protein (His Tag) SDS-PAGE