

Anti-GDF3 antibody

Catalog Number: 142968

Product name

Anti-GDF3 antibody

Specificity

Human GDF-3

Antibody description

Rabbit Polyclonal to Human GDF3

Preparation

Produced in rabbits immunized with a synthetic peptide corresponding to the center region of the Human GDF-3, and purified by antigen affinity chromatography.

Formulation

0.2 µm filtered solution in PBS

Storage

This antibody can be stored at 2°C-8°C for one month without detectable loss of activity. Antibody products are stable for twelve months from date of receipt when stored at -20°C to -80°C.

Preservative-Free.

Sodium azide is recommended to avoid contamination (final concentration 0.05%-0.1%). It is toxic to cells and should be disposed of properly. Avoid repeated freeze-thaw cycles.

Clonality

Polyclonal

Ig Type

Rabbit IgG

Applications

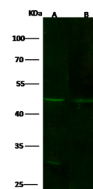
WB, ICC/IF, IF

Dilutions

WB: 5-20 µg/ml

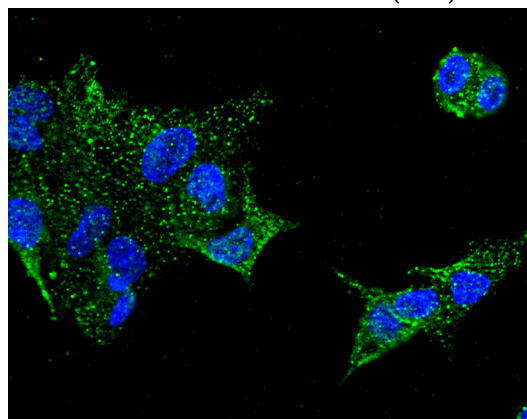
ICC/IF: 0.5-3µg/mL

Validations



Items	Lanes	A	B
Sample (whole cell lysate)		HepG2	SH-SY5Y
Sample Volume (µg/lane)		30	30
Gel	13% SDS-PAGE reducing gel		
Recommended Concentration	10 µg/ml		
Secondary Antibody	Dylight 800-labeled Antibody to Rabbit IgG (H+L), at 1:5000 dilution.		
Explanation	Developed using Odyssey imaging system. Predicted band size : 41 kDa Observed band size : 46 kDa Additional bands at : 30 kDa (We are unsure as to the identity of these extra bands.)		

Human GDF-3 Western blot (WB) 15577



Human GDF-3 Immunofluorescence(IF) 15578