

CRM1 antibody

Catalog Number: 109568

Product name

CRM1 antibody

IP: 1:200-1:2000

IHC: 1:20-1:200

Specificity

Human, Mouse, Rat; other species not tested.

Antibody description

CRM1 Rabbit Polyclonal antibody. Positive WB detected in HeLa cells, HT-1080 cells. Positive IP detected in HeLa cells. Positive IHC detected in human heart tissue, human kidney tissue, human pancreas tissue. Observed molecular weight by Western-blot: 100-110 kDa

Preparation

This antibody was obtained by immunization of CRM1 recombinant protein (Accession Number: XM_047445760). Purification method: Antigen affinity purified.

Formulation

PBS with 0.02% sodium azide and 50% glycerol pH 7.3.

Storage

Store at -20°C. DO NOT ALIQUOT

Clonality

Polyclonal

Ig Type

Rabbit IgG

Applications

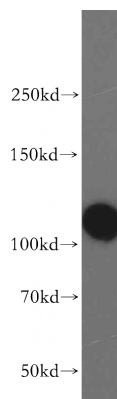
ELISA, WB, IHC, IP

Dilutions

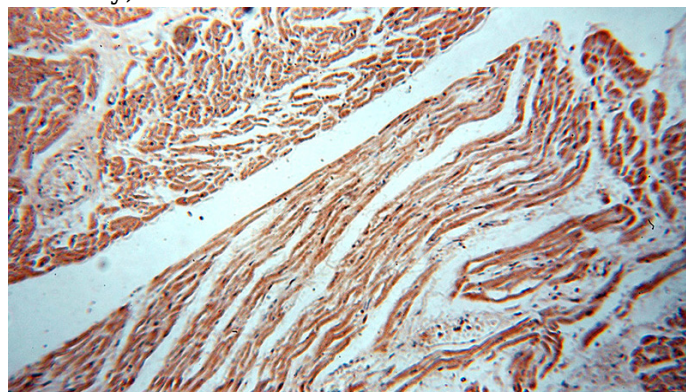
Recommended Dilution:

WB: 1:500-1:5000

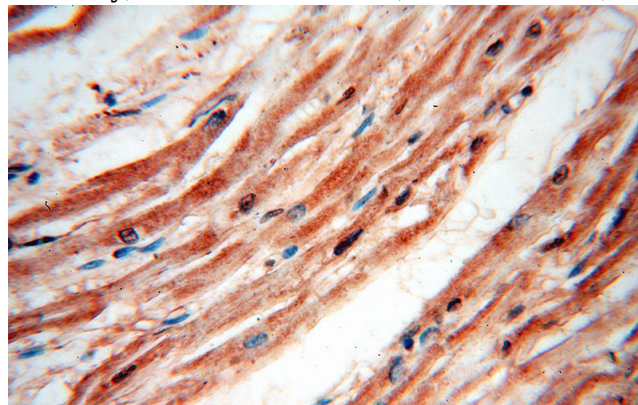
Validations



HeLa cells were subjected to SDS PAGE followed by western blot with Catalog No:109568(XPO1 antibody) at dilution of 1:500



Immunohistochemical of paraffin-embedded human heart using Catalog No:109568(XPO1 antibody) at dilution of 1:50 (under 10x lens)




Immunohistochemical of paraffin-embedded human heart using Catalog No:109568(XPO1 antibody) at dilution of 1:50 (under 10x lens)

CRM1 antibody



Catalog Number: 109568

antibody) at dilution of 1:50 (under 40x lens) 

4ug; Detection:Catalog No:109568 1:500) with HeLa cells lysate 2800ug.

IP Result of anti-XPO1 (IP:Catalog No:109568,