

SPI1 antibody

Catalog Number: 115568

Product name

SPI1 antibody

Specificity

Human, Mouse, Rat; other species not tested.

Antibody description

SPI1 Rabbit Polyclonal antibody. Positive IF detected in HepG2 cells. Positive WB detected in mouse liver tissue, HepG2 cells, RAW264.7 cells. Observed molecular weight by Western-blot: 31-38 kDa

Preparation

This antibody was obtained by immunization of Peptide (Accession Number: NM_003120). Purification method: Antigen affinity purified.

Formulation

PBS with 0.02% sodium azide and 50% glycerol pH 7.3.

Storage

Store at -20°C. DO NOT ALIQUOT

Clonality

Polyclonal

Ig Type

Rabbit IgG

Applications

ELISA, WB, IF

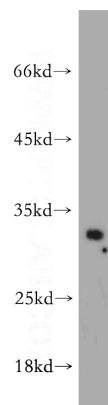
Dilutions

Recommended Dilution:

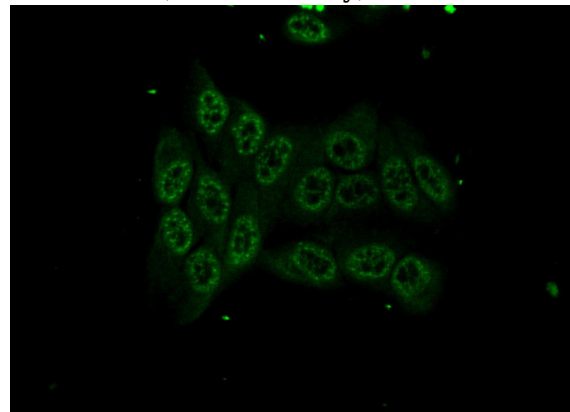
WB: 1:200-1:2000

IF: 1:50-1:500

Validations



mouse liver tissue were subjected to SDS PAGE followed by western blot with Catalog No:115568(SPI1 antibody) at dilution of 1:300



Immunofluorescent analysis of (10% Formaldehyde) fixed HepG2 cells using Catalog No:115568(SPI1 Antibody) at dilution of 1:50 and Alexa Fluor 488-conjugated AffiniPure Goat Anti-Rabbit IgG(H+L)