

RBX1 antibody

Catalog Number: 114568

Product name

RBX1 antibody

IP: 1:200-1:2000

IHC: 1:20-1:200

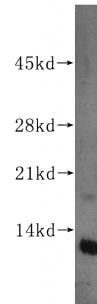
Specificity

Human, Mouse, Rat; other species not tested.

Validations

Antibody description

RBX1 Rabbit Polyclonal antibody. Positive WB detected in HeLa cells, Jurkat cells. Positive IP detected in HeLa cells. Positive IHC detected in human heart tissue. Observed molecular weight by Western-blot: 12 kDa



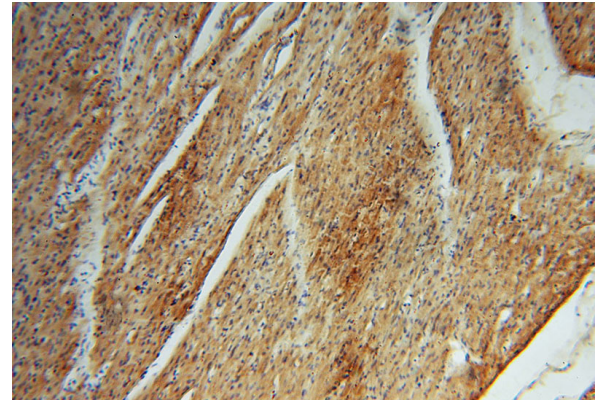
Preparation

This antibody was obtained by immunization of RBX1 recombinant protein (Accession Number: NM_014248). Purification method: Antigen affinity purified.

HeLa cells were subjected to SDS PAGE followed by western blot with Catalog No:114568(RBX1 antibody) at dilution of 1:500

Formulation

PBS with 0.02% sodium azide and 50% glycerol pH 7.3.



Storage

Store at -20°C. DO NOT ALIQUOT

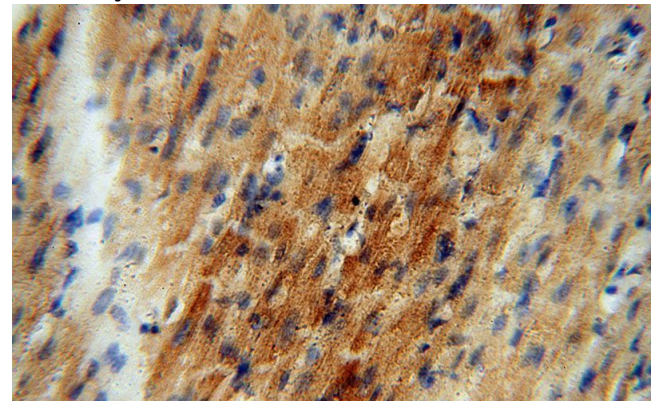
Clonality

Polyclonal

Immunohistochemical of paraffin-embedded human heart using Catalog No:114568(RBX1 antibody) at dilution of 1:50 (under 10x lens)

Ig Type

Rabbit IgG



Applications

ELISA, WB, IHC, IP

Dilutions

Recommended Dilution:

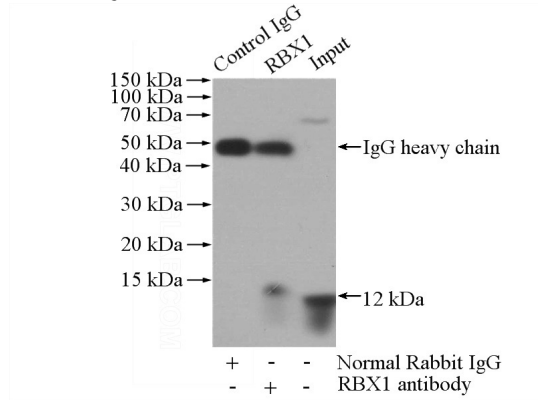
WB: 1:500-1:5000

Immunohistochemical of paraffin-embedded human heart using Catalog No:114568(RBX1

RBX1 antibody

Catalog Number: 114568

antibody) at dilution of 1:50 (under 40x lens)



IP Result of anti-RBX1 (IP:Catalog No:114568, 4ug; Detection:Catalog No:114568 1:500) with HeLa cells lysate 1520ug.