

Anti-Carbonic Anhydrase II antibody



Catalog Number: 103568

Product name

Anti-Carbonic Anhydrase II antibody

Immunogen

[Human Carbonic Anhydrase II \(His Tag\) recombinant protein](#)

Specificity

Human Carbonic Anhydrase II / CA2

Antibody description

Rabbit polyclonal to Carbonic Anhydrase II

Preparation

Produced in rabbits immunized with purified, recombinant Human Carbonic Anhydrase II / CA2 (rh Carbonic Anhydrase II / CA2; NP_000058.1; Met 1-Lys 260). Carbonic Anhydrase II / CA2 specific IgG was purified by Human Carbonic Anhydrase II / CA2 affinity chromatography.

Formulation

0.2 µm filtered solution in PBS with 5% trehalose

Storage

This antibody can be stored at 2°C-8°C for one month without detectable loss of activity. Antibody products are stable for twelve months from date of receipt when stored at -20°C to -80°C.

Preservative-Free.

Sodium azide is recommended to avoid contamination (final concentration 0.05%-0.1%). It is toxic to cells and should be disposed of properly. Avoid repeated freeze-thaw cycles.

Clonality

Polyclonal

Ig Type

Rabbit IgG

Applications

ELISA, WB, IP

Dilutions

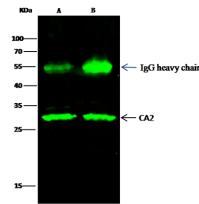
WB: 1-5 µg/mL

ELISA: 0.1-0.2 µg/mL

This antibody can be used at 0.1-0.2 µg/mL with the appropriate secondary reagents to detect Human CA2. The detection limit for Human CA2 is approximately 0.00245 ng/well.

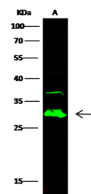
IP: 1-4 µg/mg of lysate

Validations



Items	Lanes	A	B
Sample (whole cell lysate)		293T	Caco-2
Sample quantity		0.5 mg	
IP antibody quantity		2 µg	
Protein G agarose		15 µl of 50% Protein G Agarose	
Gel		13% SDS-PAGE/reducing gel	
Primary antibody		CA2 antibody at 2 µg/ml [Cat# 10478-RP02]	
Secondary antibody		Dylight 800-labeled antibody to rabbit IgG (H+L), at 1:5000 dilution.	

Carbonic Anhydrase II / CA2 Antibody, Rabbit PAb, Antigen Affinity Purified



Items	Lanes	A
Sample (whole cell lysate)		HBR293
Sample Volume (µg/lane)		30
Gel		13% SDS-PAGE reducing gel
Recommended Concentration		1.5 µg/ml
Secondary Antibody		Dylight 800-labeled Antibody To Rabbit IgG (H+L), at 1:5000 dilution.

Carbonic Anhydrase II / CA2 Antibody, Rabbit PAb, Antigen Affinity Purified, Western blot