

HSP70 antibody

Catalog Number: 111568

Product name

HSP70 antibody

Specificity

Human, Mouse, Rat; other species not tested.

Antibody description

HSP70 Rabbit Polyclonal antibody. Positive WB detected in multi-cells/tissue, A431 cells, A549 cells, COLO 320 cells, HepG2 cells, human brain tissue, Jurkat cells, MCF7 cells, mouse uterus tissue, PC-3 cells. Positive IP detected in mouse brain tissue. Positive FC detected in HepG2 cells. Positive IHC detected in human prostate cancer tissue, human breast cancer tissue, human liver cancer tissue. Positive IF detected in HepG2 cells. Observed molecular weight by Western-blot: 66-70 kDa

Preparation

This antibody was obtained by immunization of HSP70 recombinant protein (Accession Number: NM_005346). Purification method: Antigen affinity purified.

Formulation

PBS with 0.1% sodium azide and 50% glycerol pH 7.3.

Storage

Store at -20°C. DO NOT ALIQUOT

Clonality

Polyclonal

Ig Type

Rabbit IgG

Applications

ELISA, IHC, WB, IF, FC, IP

Dilutions

Recommended Dilution:

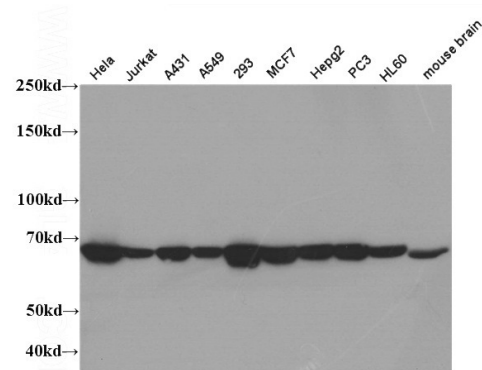
WB: 1:1000-1:10000

IP: 1:500-1:5000

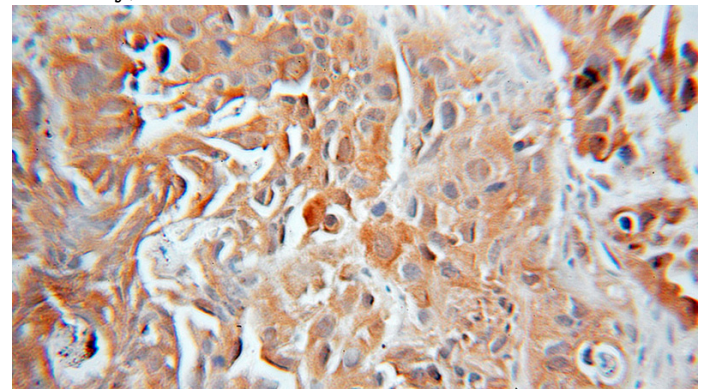
IHC: 1:20-1:200

IF: 1:20-1:200

Validations



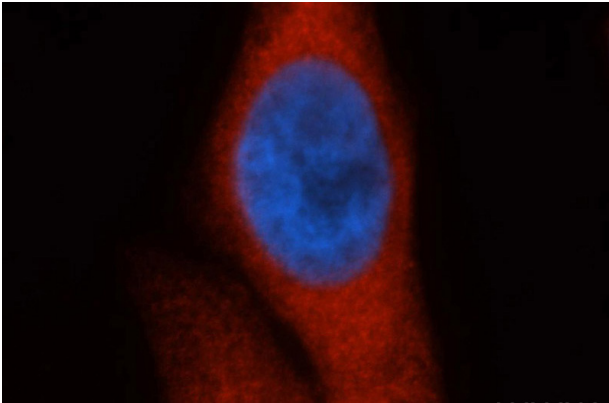
WB result of Catalog No:111568(HSPA1A antibody).



Immunohistochemical of paraffin-embedded human prostate cancer using Catalog No:111568(HSP70 antibody) at dilution of 1:100 (under 10x lens)

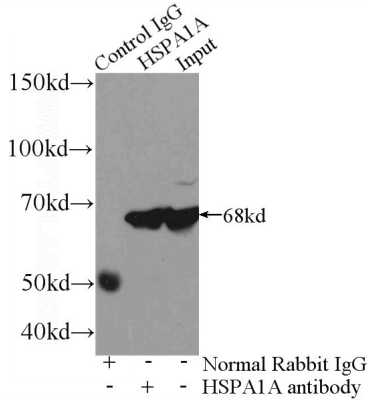
HSP70 antibody

Catalog Number: 111568

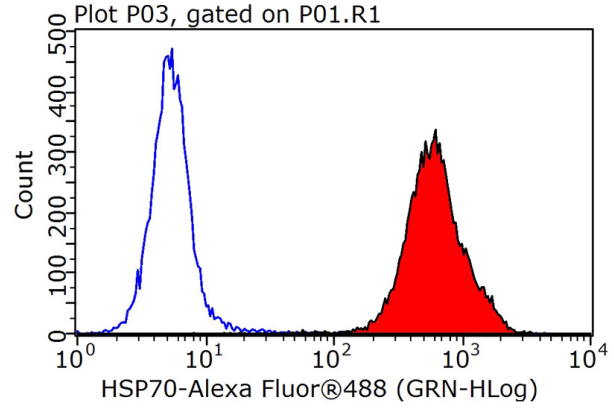


Immunofluorescent analysis of HepG2 cells, using HSPA1A antibody Catalog No:111568 at 1:50 dilution and Rhodamine-labeled goat anti-rabbit IgG (red). Blue pseudocolor = DAPI (fluorescent

DNA dye).



IP Result of anti-HSP70 (IP:Catalog No:111568, 3ug; Detection:Catalog No:111568 1:1000) with mouse brain tissue lysate 3600ug.



1X10⁶ HepG2 cells were stained with 0.2ug HSP70 antibody (Catalog No:111568, red) and control antibody (blue). Fixed with 90% MeOH blocked with 3% BSA (30 min). Alexa Fluor 488-conjugated AffiniPure Goat Anti-Rabbit IgG(H+L) with dilution 1:1000.