

# Human ACE2 / Angiotensin-Converting Enzyme 2 (Fc Tag) recombinant protein



Catalog Number: 501568

## General Information

### Gene Name Synonym

ACE-related carboxypeptidase; Angiotensin-converting enzyme homolog; Metalloprotease MPROT15; Processed angiotensin-converting enzyme 2

### Protein Construction

A DNA sequence encoding the extracellular domain (Met 1-Ser 740) of human ACE2 precursor (NP\_068576.1) was expressed with the fused Fc region of human IgG1 at the C-terminus.

### Organism

Human

### Expression Host

Human Cells

## QC Testing

### Activity

1. Using the Octet RED System, the affinity constant (Kd) of human AEC2-Fc (Cat: 501568) bound to Spike (HCoV-EMC/2012) (Cat: 503810) was 6 nM.
2. Using the Octet RED System, the affinity constant (Kd) of human AEC2-Fc (Cat: 501568) bound to Spike (HCoV-EMC/2012) (Cat: 503542) was 30 nM.
3. Using the Octet RED System, the affinity constant (Kd) of human AEC2-Fc (Cat: 501568) bound to Spike (HCoV-EMC/2012) (ECD, aa 1-1297) (Cat: 503176) was 30 nM.
4. Using the Octet RED System, the affinity constant (Kd) of human AEC2-Fc (Cat: 501568) bound to Spike-His (aa 1-760) (Cat: 500181) was 10 nM.

### Purity

> 95 % as determined by SDS-PAGE

### Endotoxin

< 1.0 EU per  $\mu\text{g}$  of the protein as determined by the LAL method

### Stability

Samples are stable for up to twelve months from date of receipt at  $-70^{\circ}\text{C}$

### Predicted N terminal

Gln 38

### Molecular Mass

The recombinant human ACE2/Fc is a disulfide-linked homodimeric protein. The reduced monomer consists of 961 amino acids and predicts a molecular mass of 110.3 kDa. As a result of glycosylation, the rhACE2/Fc monomer migrates as approximately 145-150 kDa band in SDS-PAGE under reducing conditions.

### Formulation

- Lyophilized from sterile 100mM Glycine, 10mM NaCl, 50mM Tris, pH 7.5
1. 5 % trehalose and mannitol are added as protectants before lyophilization.
  2. Please contact us for any concerns or special requirements.

## Usage Guide

### Storage

Store it under sterile conditions at  $-20^{\circ}\text{C}$  to  $-80^{\circ}\text{C}$ . It is recommended that the protein be aliquoted for optimal storage. Avoid repeated freeze-thaw cycles.

### Reconstitution

Adding sterile water, prepare a stock solution of 0.25 mg/ml. Concentration is measured by UV-Vis.

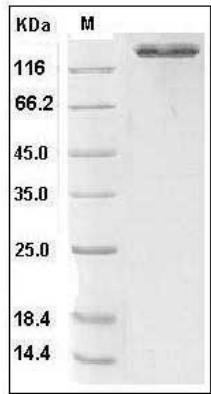
### SDS-PAGE

# Human ACE2 / Angiotensin-Converting Enzyme 2 (Fc Tag) recombinant protein



Catalog Number: 501568

---



Human ACE2 / Angiotensin-Converting Enzyme 2  
Protein (Fc Tag) SDS-PAGE