

Cofilin antibody



Catalog Number: 107168

Product name

Cofilin antibody

IHC: 1:20-1:200

IF: 1:20-1:200

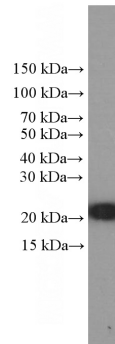
Specificity

Human, Mouse, Rat; other species not tested.

Antibody description

Cofilin Mouse Monoclonal antibody. Positive IF detected in Hela cells. Positive IHC detected in human testis tissue. Positive WB detected in HeLa cells, human heart tissue, Neuro-2a cells, rat brain tissue. Observed molecular weight by Western-blot: 18 kDa

Validations



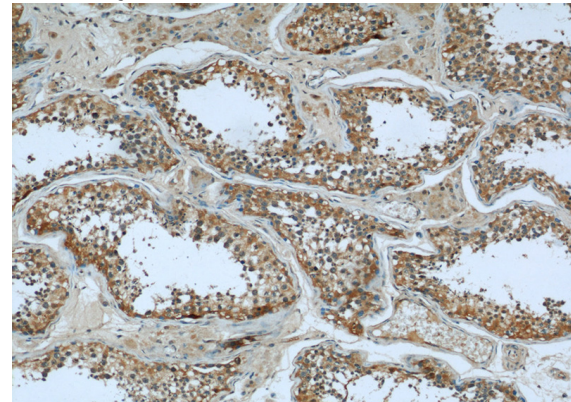
Preparation

This antibody was obtained by immunization of Cofilin recombinant protein (Accession Number: NM_005507). Purification method: Protein A purified.

HeLa cells were subjected to SDS PAGE followed by western blot with Catalog No:107168(Cofilin Antibody) at dilution of 1:2000

Formulation

PBS with 0.02% sodium azide and 50% glycerol pH 7.3.



Storage

Store at -20°C. DO NOT ALIQUOT

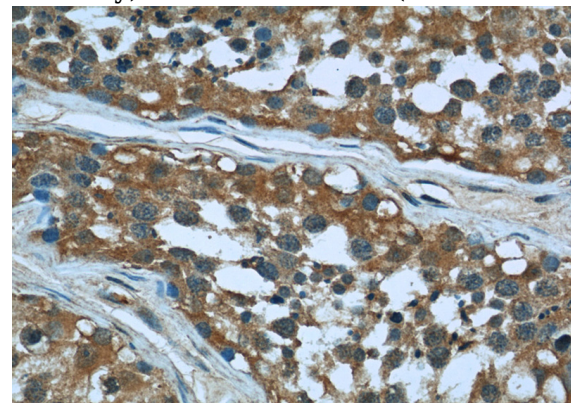
Clonality

Monoclonal

Immunohistochemical of paraffin-embedded human testis using Catalog No:107168(CFL1 antibody) at dilution of 1:50 (under 10x lens)

Ig Type

Mouse IgG2a



Applications

ELISA, IHC, IF, WB

Dilutions

Recommended Dilution:

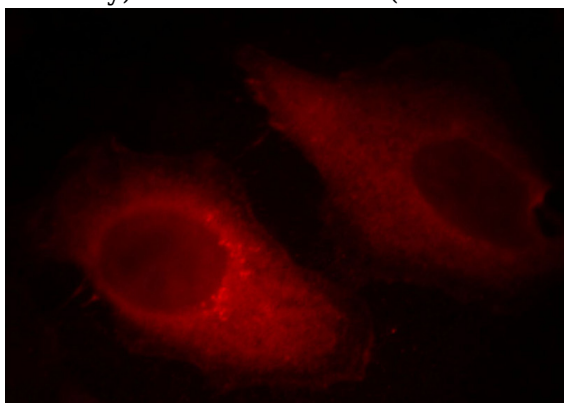
WB: 1:1000-1:10000

Immunohistochemical of paraffin-embedded human testis using Catalog No:107168(CFL1

Cofilin antibody

Catalog Number: 107168

antibody) at dilution of 1:50 (under 40x lens)



Immunofluorescent analysis of HeLa cells, using CFL1 antibody Catalog No: at 1:50 dilution and Rhodamine-labeled goat anti-mouse IgG (red). Blue pseudocolor = DAPI (fluorescent DNA dye).