

TOM1 antibody



Catalog Number: 116168

Product name

TOM1 antibody

Specificity

human, mouse, rat; other species not tested.

Antibody description

TOM1 Rabbit Polyclonal antibody. Positive WB detected in human liver tissue, HeLa cells, human skeletal muscle tissue, K-562 cells. Observed molecular weight by Western-blot: 54kd

Preparation

This antibody was obtained by immunization of TOM1 recombinant protein (Accession Number: NM_001135732). Purification method: Antigen affinity purified.

Formulation

PBS with 0.02% sodium azide and 50% glycerol pH 7.3.

Storage

Store at -20°C. DO NOT ALIQUOT

Clonality

Polyclonal

Ig Type

Rabbit IgG

Applications

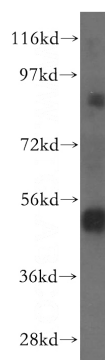
ELISA, WB

Dilutions

Recommended Dilution:

WB: 1:500-1:5000

Validations



human liver tissue were subjected to SDS PAGE followed by western blot with Catalog No:116168(TOM1 antibody) at dilution of 1:600