

Anti-Casein Kinase 1 alpha Rabbit antibody



Catalog Number: 168868

Product name

Anti-Casein Kinase 1 alpha Rabbit antibody

Specificity

Human, Mouse, Rat

Antibody description

Casein Kinase 1 alpha Rabbit monoclonal antibody

Preparation

Antigen: A synthetic peptide of human Casein Kinase 1 alpha

Formulation

Supplied in 50nM Tris-Glycine(pH 7.4), 0.15M NaCl, 40%Glycerol, 0.01% sodium azide and 0.05% BSA.

Storage

Store at 4°C short term. Aliquot and store at -20°C long term. Avoid freeze / thaw cycle.

Clonality

Monoclonal

Ig Type

Rabbit IgG

Applications

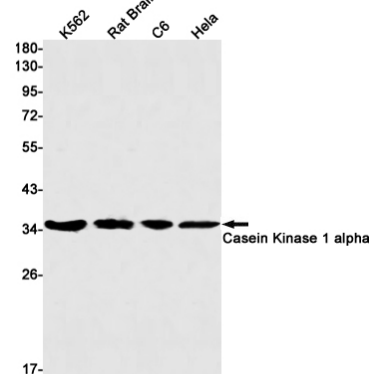
WB, IP

Dilutions

1:1000

1:20

Validations



Western blot detection of Casein Kinase 1 alpha in K562, Rat Brain, C6, HeLa cell lysates using Casein Kinase 1 alpha Rabbit mAb(1:1000 diluted). Predicted band size: 39kDa. Observed band size: 34kDa.