

RUFY1 antibody

Catalog Number: 114868

Product name

RUFY1 antibody

IP: 1:200-1:1000

IF: 1:20-1:200

Specificity

Human, Mouse, Rat; other species not tested.

Antibody description

RUFY1 Rabbit Polyclonal antibody. Positive IP detected in HeLa cells. Positive WB detected in HeLa cells. Positive IF detected in HeLa cells. Observed molecular weight by Western-blot: 69kd and 80k

Preparation

This antibody was obtained by immunization of RUFY1 recombinant protein (Accession Number: NM_001040452). Purification method: Antigen affinity purified.

Formulation

PBS with 0.02% sodium azide and 50% glycerol pH 7.3.

Storage

Store at -20°C. DO NOT ALIQUOT

Clonality

Polyclonal

Ig Type

Rabbit IgG

Applications

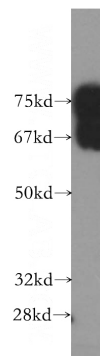
ELISA, WB, IF, IP

Dilutions

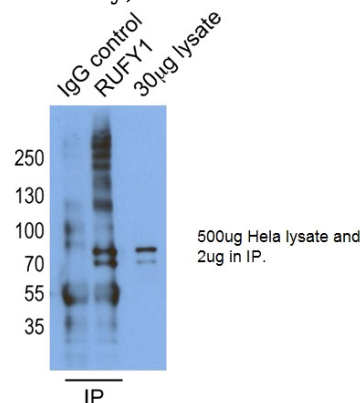
Recommended Dilution:

WB: 1:1000-1:10000

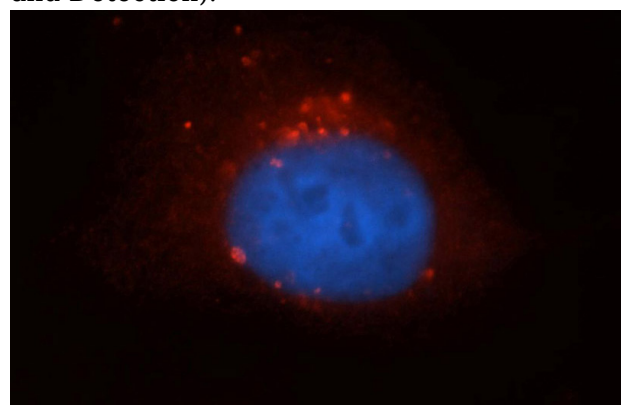
Validations



HeLa cells were subjected to SDS PAGE followed by western blot with Catalog No:114868(RUFY1 antibody) at dilution of 1:1000



IP result of anti-RUFY1(Catalog No:114868 for IP and Detection).



Immunofluorescent analysis of HeLa cells, using RUFY1 antibody Catalog No:114868 at 1:50 dilution and Rhodamine-labeled goat anti-rabbit

RUFY1 antibody



Catalog Number: 114868

IgG (red). Blue pseudocolor = DAPI (fluorescent DNA dye).