

# SF1 Polyclonal Antibody



Catalog Number: 164868

## Product name

SF1 Polyclonal Antibody

## Specificity

Human, Mouse

## Antibody description

Polyclonal antibody to SF1

## Preparation

Antigen: Recombinant fusion protein containing a sequence corresponding to amino acids 1-280 of human SF1 (NP\_973727.1).

## Formulation

PBS with 0.02% sodium azide, 50% glycerol, pH7.3.

## Storage

Store at -20°C. Avoid freeze / thaw cycles.

## Clonality

Polyclonal

## Ig Type

Rabbit IgG

## Applications

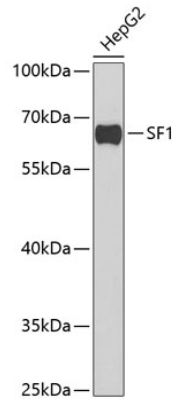
WB, IHC

## Dilutions

WB 1:500 - 1:2000

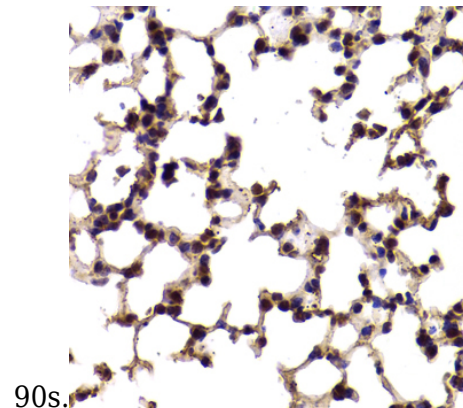
IHC 1:50 - 1:200

## Validations



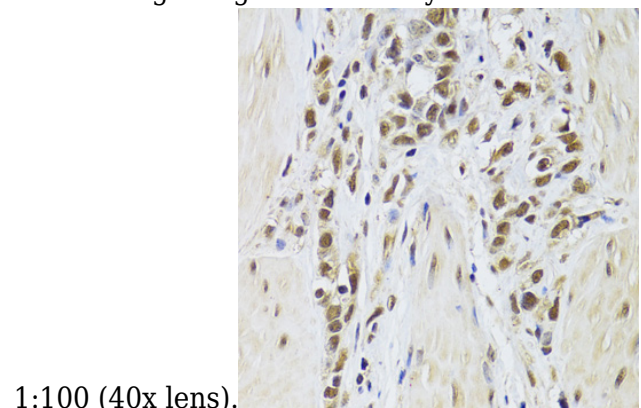
## Western blot - SF1 Polyclonal Antibody

Western blot analysis of extracts of HepG2 cells, using SF1 antibody at 1:1000 dilution. Secondary antibody: HRP Goat Anti-Rabbit IgG (H+L) at 1:10000 dilution. Lysates/proteins: 25ug per lane. Blocking buffer: 3% nonfat dry milk in TBST. Detection: ECL Basic Kit. Exposure time:



## Immunohistochemistry - SF1 Polyclonal Antibody

Immunohistochemistry of paraffin-embedded mouse lung using SF1 Antibody at dilution of



## Immunohistochemistry - SF1 Polyclonal Antibody

# SF1 Polyclonal Antibody



Catalog Number: 164868

---

Immunohistochemistry of paraffin-embedded

human gastric cancer using SF1 Antibody at  
dilution of 1:100 (40x lens).