

# Anti-CD85 / ILT2 / ILR1 antibody



Catalog Number: 100868

## Product name

Anti-CD85 / ILT2 / ILR1 antibody

## Immunogen

[Human CD85 / ILT2 / ILR1 \(His Tag\) recombinant protein](#)

## Specificity

Human CD85 / ILT2 / ILR1

## Antibody description

Mouse monoclonal to CD85 / ILT2 / ILR1

## Preparation

This antibody was produced from a hybridoma resulting from the fusion of a mouse myeloma with B cells obtained from a mouse immunized with purified, recombinant Human CD85 / ILT2 / ILR1 (rh CD85 / ILT2 / ILR1; Q4QQW2\_RAT; Met1-His458) and conjugated with PE under optimum conditions, the unreacted PE was removed.

## Formulation

Aqueous solution containing 0.5% BSA and 0.09% sodium azide

## Storage

This antibody is stable for 12 months from date of receipt when stored at 2°C-8°C. Protected from prolonged exposure to light. Do not freeze ! Sodium azide is toxic to cells and should be disposed of properly. Flush with large volumes of water during disposal.

## Clonality

Monoclonal

## Ig Type

Mouse IgG1

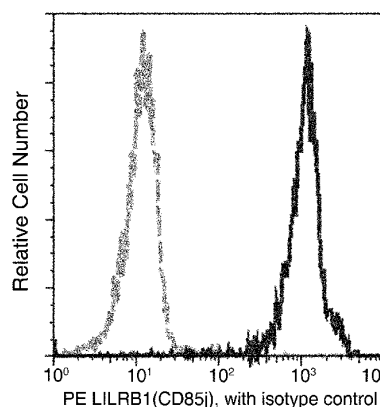
## Applications

FCM

## Dilutions

FCM

## Validations



LILRB1 Antibody (PE), Mouse MAb, Flow cytometric analysis

Flow cytometric analysis of Human LILRB1(CD85j) expression on human peripheral blood monocytes. Cells were stained with PE-conjugated Mouse anti-Human LILRB1(CD85j). The histogram were derived from gated events with the forward and side light-scatter characteristics of viable monocytes.