

# Anti-ATF2 Rabbit antibody



Catalog Number: 167468

## Product name

Anti-ATF2 Rabbit antibody

## Specificity

Human

## Antibody description

ATF2 Rabbit polyclonal antibody

## Preparation

Antigen: A synthesized peptide derived from human ATF2

## Formulation

Rabbit IgG in phosphate buffered saline , pH 7.4, 150mM NaCl, 0.02% sodium azide and 50% glycerol.

## Storage

Store at 4°C short term. Store at -20°C long term. Avoid freeze / thaw cycle.

## Clonality

Polyclonal

## Ig Type

Rabbit IgG

## Applications

WB, IHC-P, ICC/IF, IP

## Dilutions

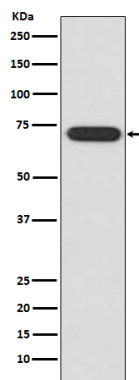
WB: 1/500-1/2000

IHC: 1/50-1/100

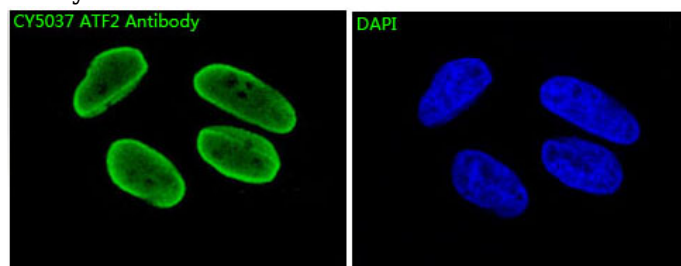
ICC/IF: 1/50-1/100

IP: 1/30

## Validations



Western blot analysis of ATF2 expression in HeLa cell lysate.



Immunofluorescent analysis of HeLa cells, using ATF2 Antibody .