

# SNW1 antibody



Catalog Number: 115468

## Product name

SNW1 antibody

## Immunogen

[Human SNW1 Recombinant protein \(His tag\)](#)

## Specificity

Human; other species not tested.

## Antibody description

SNW1 Rabbit Polyclonal antibody. Positive IF detected in HepG2 cells. Positive WB detected in MCF-7 cells, HepG2 cells. Observed molecular weight by Western-blot: 62-69 kDa

## Preparation

This antibody was obtained by immunization of SNW1 recombinant protein (Accession Number: NM\_012245). Purification method: Antigen affinity purified.

## Formulation

PBS with 0.1% sodium azide and 50% glycerol pH 7.3.

## Storage

Store at -20°C. DO NOT ALIQUOT

## Clonality

Polyclonal

## Ig Type

Rabbit IgG

## Applications

ELISA, WB, IF

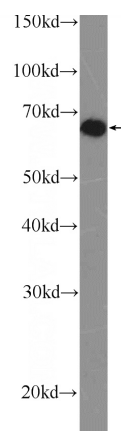
## Dilutions

Recommended Dilution:

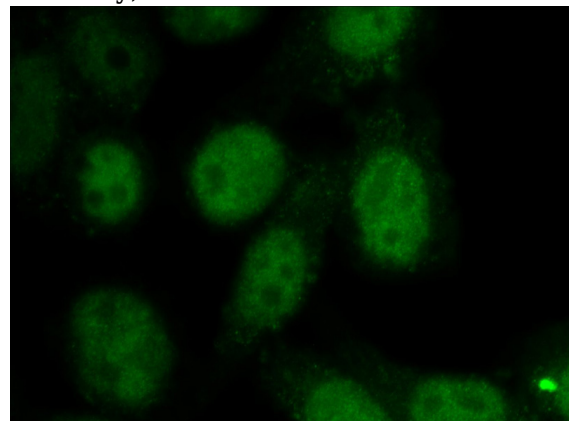
WB: 1:200-1:2000

IF: 1:10-1:100

## Validations



MCF-7 cells were subjected to SDS PAGE followed by western blot with Catalog No:115468(SNW1 Antibody) at dilution of 1:600



Immunofluorescent analysis of HepG2 cells using Catalog No:115468(SNW1 Antibody) at dilution of 1:25 and Alexa Fluor 488-conjugated AffiniPure Goat Anti-Rabbit IgG(H+L)