

# HS1BP3 antibody

Catalog Number: 111468

## Product name

HS1BP3 antibody

## Specificity

Human, Mouse, Rat; other species not tested.

## Antibody description

HS1BP3 Rabbit Polyclonal antibody. Positive WB detected in HT-1080 cells, HeLa cells, Jurkat cells, NIH/3T3 cells. Positive IHC detected in human lung cancer tissue. Observed molecular weight by Western-blot: 55-58 kDa

## Preparation

This antibody was obtained by immunization of HS1BP3 recombinant protein (Accession Number: BC027947). Purification method: Antigen affinity purified.

## Formulation

PBS with 0.02% sodium azide and 50% glycerol pH 7.3.

## Storage

Store at -20°C. DO NOT ALIQUOT

## Clonality

Polyclonal

## Ig Type

Rabbit IgG

## Applications

ELISA, WB, IHC

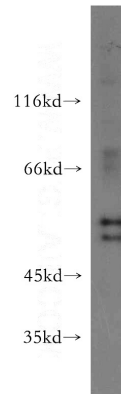
## Dilutions

Recommended Dilution:

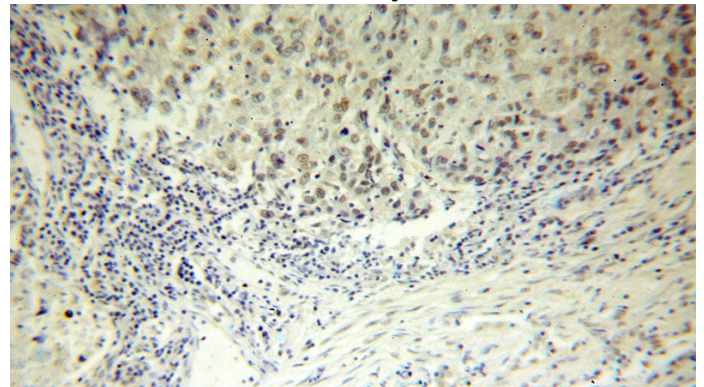
WB: 1:200-1:2000

IHC: 1:20-1:200

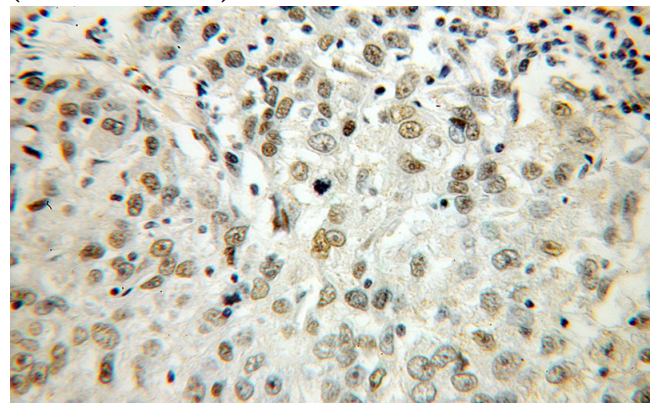
## Validations



HT-1080 cells were subjected to SDS PAGE followed by western blot with Catalog No:111468(HS1BP3 antibody) at dilution of 1:100



Immunohistochemical of paraffin-embedded human lung cancer using Catalog No:111468(HS1BP3 antibody) at dilution of 1:100 (under 10x lens)



Immunohistochemical of paraffin-embedded human lung cancer using Catalog No:111468(HS1BP3 antibody) at dilution of 1:100

# HS1BP3 antibody



Catalog Number: 111468

---

(under 40x lens)