

Anti-AMPK alpha Rabbit antibody



Catalog Number: 169068

Product name

Anti-AMPK alpha Rabbit antibody

Specificity

Human, Mouse, Rat, Monkey

Antibody description

AMPK alpha Rabbit polyclonal antibody

Preparation

Antigen: The antiserum was produced against synthesized peptide derived from human AMPK alpha. AA range:140-189

Formulation

Liquid in PBS containing 50% glycerol, 0.5% BSA and 0.02% sodium azide.

Storage

Store at 4°C short term. Store at -20°C long term. Avoid freeze / thaw cycle.

Clonality

Polyclonal

Ig Type

Rabbit IgG

Applications

WB, IHC-P, ELISA

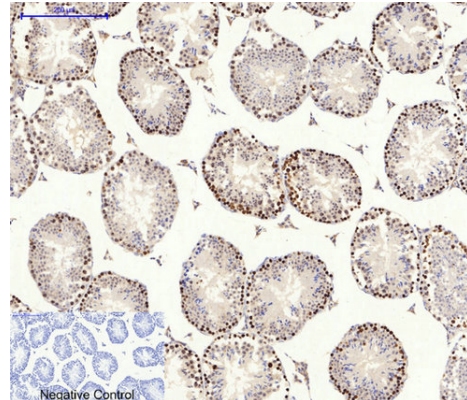
Dilutions

WB: 1/500 - 1/2000

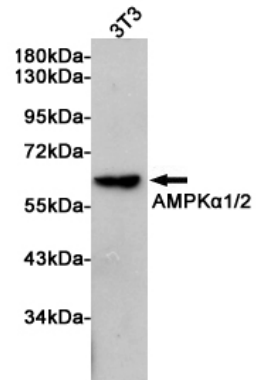
IHC: 1/100 - 1/300

ELISA: 1/40000

Validations

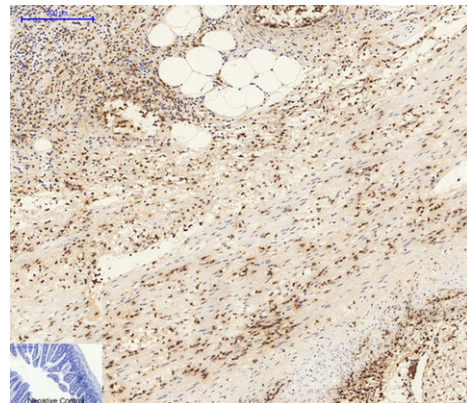


Immunohistochemical analysis of paraffin-embedded Mouse-testis tissue. 1,AMPK α 1/2 Polyclonal Antibody was diluted at 1:200(4°C,overnight). 2, Sodium citrate pH 6.0 was used for antibody retrieval(>98°C,20min). 3,Secondary antibody was diluted at 1:200(room temperature, 30min). Negative control was used



by secondary antibody only.

Western blot analysis of extracts from 3T3 cell lysates using AMPK α 1/2 Rabbit pAb at 1:1000 dilution. Predicted band size: 62KDa. Observed band size: 62KDa.

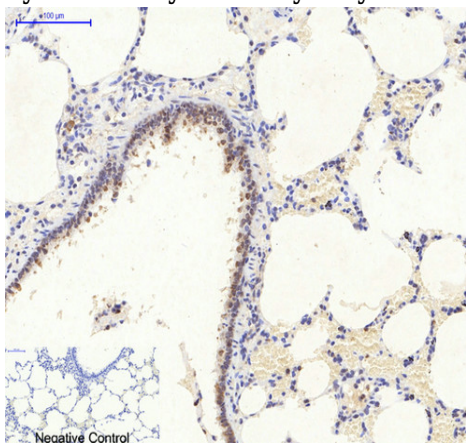


Immunohistochemical analysis of paraffin-embedded Mouse-colon tissue. 1,AMPK α 1/2

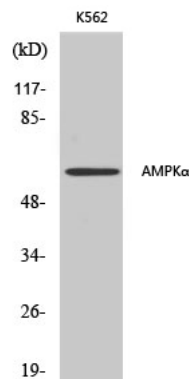
Anti-AMPK alpha Rabbit antibody

Catalog Number: 169068

Polyclonal Antibody was diluted at 1:200(4°C,overnight). 2, Sodium citrate pH 6.0 was used for antibody retrieval(>98°C,20min). 3,Secondary antibody was diluted at 1:200(room temperature, 30min). Negative control was used by secondary antibody only.

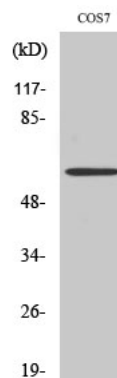


Immunohistochemical analysis of paraffin-embedded Rat-lung tissue. 1,AMPKα1/2 Polyclonal Antibody was diluted at 1:200(4°C,overnight). 2, Sodium citrate pH 6.0 was used for antibody retrieval(>98°C,20min). 3,Secondary antibody was diluted at 1:200(room temperature, 30min). Negative control was used by secondary antibody



only.

Western Blot analysis of various cells using AMPKα1/2 Polyclonal Antibody diluted at 1:500



Western Blot analysis of COS7 cells using AMPKα1/2 Polyclonal Antibody diluted at 1:500