

# SARA antibody

Catalog Number: 115068

## Product name

SARA antibody

WB: 1:200-1:2000

IP: 1:200-1:2000

## Specificity

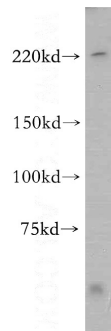
Human, Mouse, Rat; other species not tested.

IF: 1:10-1:100

## Antibody description

SARA Rabbit Polyclonal antibody. Positive IF detected in HepG2 cells. Positive FC detected in HepG2 cells. Positive WB detected in mouse brain tissue, human brain tissue, MCF7 cells, mouse kidney tissue. Positive IP detected in mouse brain tissue. Observed molecular weight by Western-blot: 156 kDa, 180 kDa

## Validations



## Preparation

This antibody was obtained by immunization of SARA recombinant protein (Accession Number: XM\_011542437). Purification method: Antigen affinity purified.

mouse brain tissue were subjected to SDS PAGE followed by western blot with Catalog No:115068(ZFYVE9 antibody) at dilution of

## Formulation

PBS with 0.02% sodium azide and 50% glycerol pH 7.3.

1:1000

## Storage

Store at -20°C. DO NOT ALIQUOT

## Clonality

Polyclonal

## Ig Type

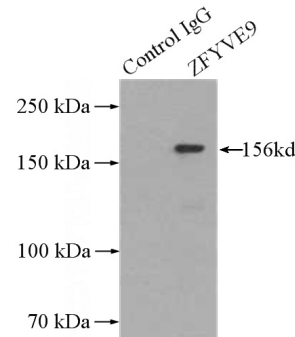
Rabbit IgG

## Applications

ELISA, WB, IF, FC, IP

## Dilutions

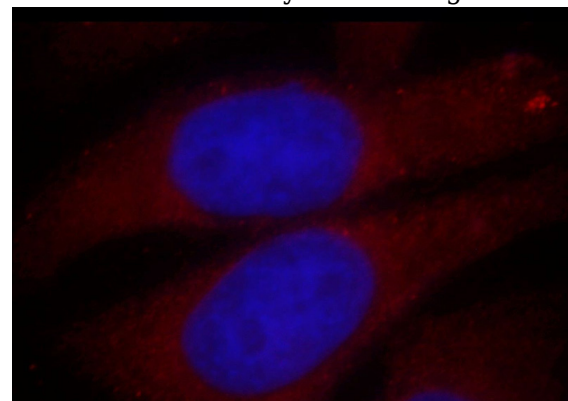
Recommended Dilution:



1:1000

+	-	Normal Rabbit IgG
-	+	ZFYVE9 Antibody

IP Result of anti-ZFYVE9 (IP:Catalog No:115068, 5ug; Detection:Catalog No:115068 1:500) with mouse brain tissue lysate 4000ug.



# SARA antibody



Catalog Number: 115068

---

Immunofluorescent analysis of HepG2 cells, using ZFYVE9 antibody Catalog No:115068 at 1:25 dilution and Rhodamine-labeled goat anti-rabbit IgG (red). Blue pseudocolor = DAPI (fluorescent DNA dye).

1X10<sup>6</sup> HepG2 cells were stained with 0.2ug ZFYVE9 antibody (Catalog No:115068, red) and control antibody (blue). Fixed with 90% MeOH blocked with 3% BSA (30 min). Alexa Fluor 488-conjugated AffiniPure Goat Anti-Rabbit IgG(H+L) with dilution 1:1500.

