

# POTED-Specific antibody



Catalog Number: 114068

## Product name

POTED-Specific antibody

## Specificity

Human, Mouse; other species not tested.

## Antibody description

POTED-Specific Rabbit Polyclonal antibody. Positive WB detected in mouse testis tissue, mouse ovary tissue. Observed molecular weight by Western-blot: 66 kDa

## Preparation

This antibody was obtained by immunization of Peptide (Accession Number: NM\_174981). Purification method: Antigen affinity purified.

## Formulation

PBS with 0.1% sodium azide and 50% glycerol pH 7.3.

## Storage

Store at -20°C. DO NOT ALIQUOT

## Clonality

Polyclonal

## Ig Type

Rabbit IgG

## Applications

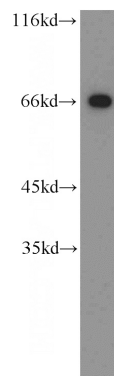
ELISA, WB

## Dilutions

Recommended Dilution:

WB: 1:200-1:2000

## Validations



mouse testis tissue were subjected to SDS PAGE followed by western blot with Catalog No:114068(POTED-Specific antibody) at dilution of 1:300