

Human KIRREL1/NEPH1 (His Tag) recombinant protein



Catalog Number: 500068

General Information

Gene Name Synonym

Kin of irregular chiasm-like protein 1; Nephrin-like protein 1

Protein Construction

A DNA sequence encoding the human KIRREL (NP_060710.3) (Met1-Leu493) was expressed with a polyhistidine tag at the C-terminus.

Organism

Human

Expression Host

Human Cells

QC Testing

Activity

Measured by the ability of the immobilized protein to support the adhesion of MS1 mouse pancreatic islet endothelial cells.

When cells are added to KIRREL coated plates (15 µg/mL, 100 µL/well), > 20% will adhere specifically after 90 minutes at 37 °C.

Purity

> 95 % as determined by SDS-PAGE.

Endotoxin

<1.0 EU per µg protein as determined by the LAL method.

Stability

Samples are stable for up to twelve months from date of receipt at -70°C

Predicted N terminal

Gln 17

Molecular Mass

The recombinant human KIRREL consists 488 amino acids and predicts a molecular mass of 53.5 kDa.

Formulation

Lyophilized from sterile PBS, pH 7.4.

1. 5 % trehalose and mannitol are added as protectants before lyophilization.

2. Please contact us for any concerns or special requirements.

Usage Guide

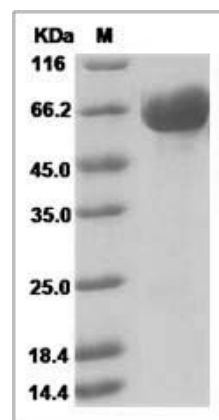
Storage

Store it under sterile conditions at -20°C to -80°C. It is recommended that the protein be aliquoted for optimal storage. Avoid repeated freeze-thaw cycles.

Reconstitution

Adding sterile water, prepare a stock solution of 0.25 mg/ml. Concentration is measured by UV-Vis.

SDS-PAGE



Human KIRREL1 / NEPH1 Protein (His Tag) SDS-PAGE