

Anti-Proteasome 20S alpha 2 Rabbit antibody



Catalog Number: 166758

Product name

Anti-Proteasome 20S alpha 2 Rabbit antibody

Specificity

Human, Mouse, Rat

Antibody description

Proteasome 20S alpha 2 Rabbit polyclonal antibody

Preparation

Antigen: A synthetic peptide of human Proteasome 20S alpha 2

Formulation

Supplied in 50nM Tris-Glycine(pH 7.4), 0.15M NaCl, 40%Glycerol, 0.01% sodium azide and 0.05% BSA.

Storage

Store at -20°C. Stable for 12 months from date of receipt.

Clonality

Polyclonal

Ig Type

Rabbit IgG

Applications

WB, IHC-P, ICC/IF, FC

Dilutions

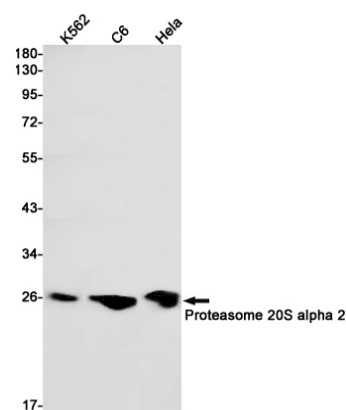
WB: 1/1000-1/5000

IHC: 1/20

ICC/IF: 1/20

FC: 1/20

Validations



Western blot detection of Proteasome 20S alpha 2 in K562,C6,Hela cell lysates using Proteasome 20S alpha 2 Rabbit pAb(1:1000 diluted).Predicted band size:26kDa.Observed band size:26kDa.