

SYCE1 antibody

Catalog Number: 115758

Product name

SYCE1 antibody

IP: 1:200-1:2000

IHC: 1:20-1:200

Specificity

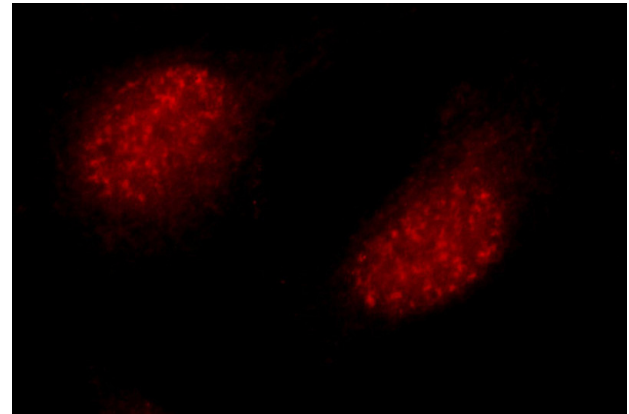
Human, Mouse, Rat; other species not tested.

IF: 1:10-1:100

Antibody description

SYCE1 Rabbit Polyclonal antibody. Positive IHC detected in human ovary tumor tissue. Positive IF detected in HepG2 cells. Positive IP detected in mouse testis tissue. Positive WB detected in mouse testis tissue. Observed molecular weight by Western-blot: 40-44 kDa

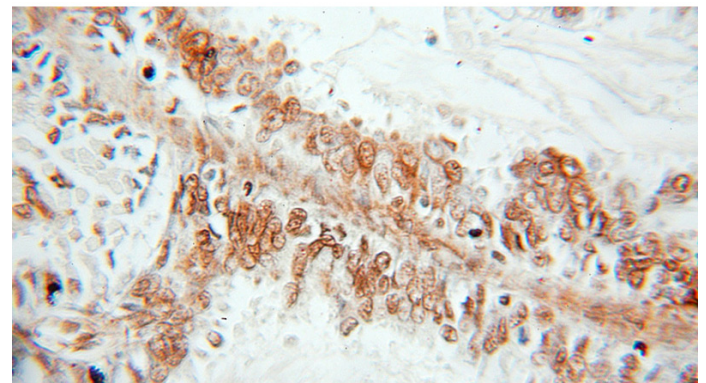
Validations



Immunofluorescent analysis of HepG2 cells using Catalog No:115758(SYCE1 Antibody) at dilution of 1:25 and Rhodamine-Goat anti-Rabbit IgG

Preparation

This antibody was obtained by immunization of SYCE1 recombinant protein (Accession Number: BC034821). Purification method: Antigen affinity purified.



Immunohistochemical of paraffin-embedded human ovary tumor using Catalog No:115758(SYCE1 antibody) at dilution of 1:50

Formulation

PBS with 0.1% sodium azide and 50% glycerol pH 7.3.

Storage

Store at -20°C. DO NOT ALIQUOT

Clonality

Polyclonal

Ig Type

Rabbit IgG

Applications

ELISA, IHC, WB, IF, IP

Dilutions

Recommended Dilution:

WB: 1:500-1:5000



(under 10x lens)

SYCE1 antibody

Catalog Number: 115758

mouse testis tissue were subjected to SDS PAGE followed by western blot with Catalog No:115758(SYCE1 antibody) at dilution of 1:1000

IP Result of anti-SYCE1 (IP:Catalog No:115758, 4ug; Detection:Catalog No:115758 1:800) with mouse testis tissue lysate 4800ug.

