

# RNF38 antibody

Catalog Number: 114758

## Product name

RNF38 antibody

IHC: 1:20-1:200

IF: 1:50-1:500

## Specificity

Human; other species not tested.

## Antibody description

RNF38 Rabbit Polyclonal antibody. Positive WB detected in HepG2 cells. Positive IF detected in HepG2 cells. Positive IHC detected in human endometrial cancer tissue. Observed molecular weight by Western-blot: 43-58 kDa

## Preparation

This antibody was obtained by immunization of RNF38 recombinant protein (Accession Number: NM\_194329). Purification method: Antigen affinity purified.

## Formulation

PBS with 0.1% sodium azide and 50% glycerol pH 7.3.

## Storage

Store at -20°C. DO NOT ALIQUOT

## Clonality

Polyclonal

## Ig Type

Rabbit IgG

## Applications

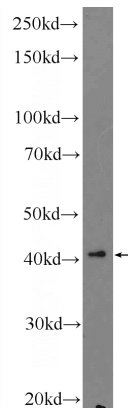
ELISA, WB, IHC, IF

## Dilutions

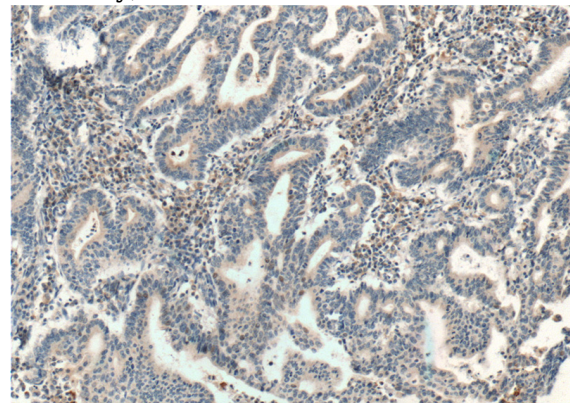
Recommended Dilution:

WB: 1:200-1:1000

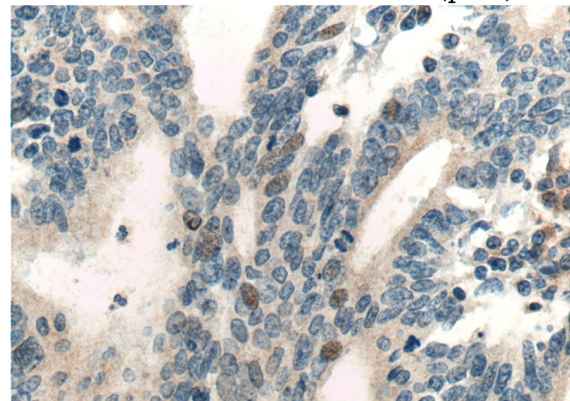
## Validations



HepG2 cells were subjected to SDS PAGE followed by western blot with Catalog No:114758(RNF38 Antibody) at dilution of 1:300



Immunohistochemistry of paraffin-embedded human endometrial cancer tissue slide using Catalog No:114758(RNF38 Antibody) at dilution of 1:200 (under 10x lens). heat mediated antigen retrieved with Tris-EDTA buffer(pH9).



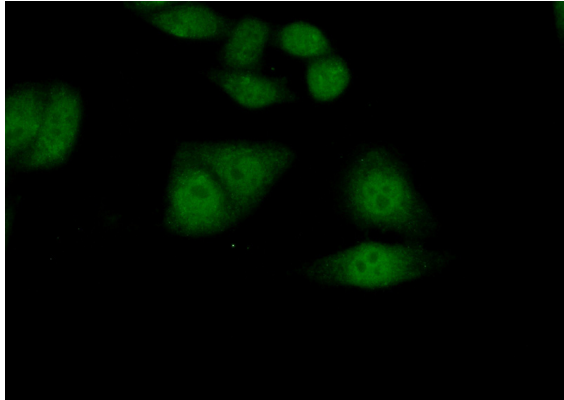
# RNF38 antibody



Catalog Number: 114758

---

Immunohistochemistry of paraffin-embedded human endometrial cancer tissue slide using Catalog No:114758(RNF38 Antibody) at dilution of 1:200 (under 40x lens). heat mediated antigen retrieved with Tris-EDTA buffer(pH9).



Immunofluorescent analysis of (10% Formaldehyde) fixed HepG2 cells using Catalog No:114758(RNF38 Antibody) at dilution of 1:50 and Alexa Fluor 488-conjugated AffiniPure Goat Anti-Rabbit IgG(H+L)