

# IMP3 antibody

Catalog Number: 111758

## Product name

IMP3 antibody

## Specificity

Human, Mouse, Rat; other species not tested.

## Antibody description

IMP3 Rabbit Polyclonal antibody. Positive WB detected in HeLa cells, MCF7 cells. Positive IP detected in HeLa cells. Observed molecular weight by Western-blot: 22 kDa

## Preparation

This antibody was obtained by immunization of IMP3 recombinant protein (Accession Number: BC020557). Purification method: Antigen affinity purified.

## Formulation

PBS with 0.1% sodium azide and 50% glycerol pH 7.3.

## Storage

Store at -20°C. DO NOT ALIQUOT

## Clonality

Polyclonal

## Ig Type

Rabbit IgG

## Applications

ELISA, WB, IP

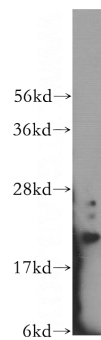
## Dilutions

Recommended Dilution:

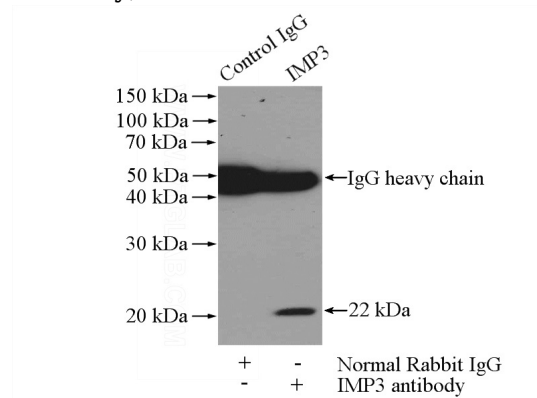
WB: 1:500-1:5000

IP: 1:200-1:2000

## Validations



HeLa cells were subjected to SDS PAGE followed by western blot with Catalog No:111758(IMP3 antibody) at dilution of 1:500



IP Result of anti-IMP3 (IP:Catalog No:111758, 3ug; Detection:Catalog No:111758 1:500) with HeLa cells lysate 1200ug.