

Phospho-ADD1-S726 pAb



Catalog Number: 166358

Product name

Phospho-ADD1-S726 pAb

Specificity

Human, Mouse, Rat

Antibody description

Polyclonal antibody to Phospho-ADD1-S726

Preparation

Antigen: A phospho specific peptide corresponding to residues surrounding S726 of human ADD1

Formulation

PBS with 0.02% sodium azide, 50% glycerol, pH7.3.

Storage

Store at -20°C. Avoid freeze / thaw cycles.

Clonality

Polyclonal

Ig Type

Rabbit IgG

Applications

WB, IHC, IF

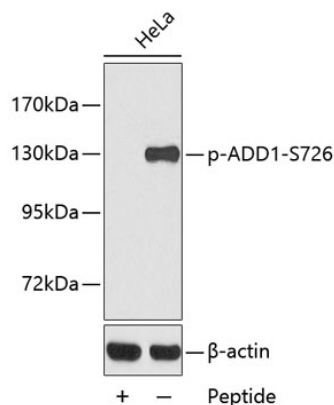
Dilutions

WB 1:500 - 1:2000

IHC 1:50 - 1:100

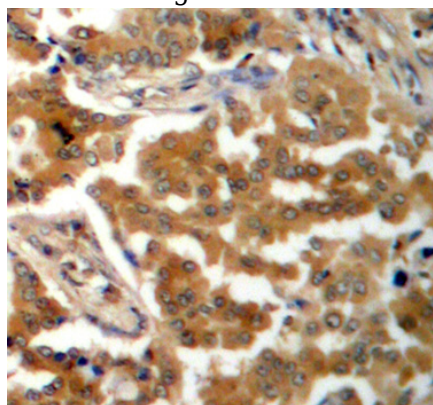
IF 1:100 - 1:200

Validations



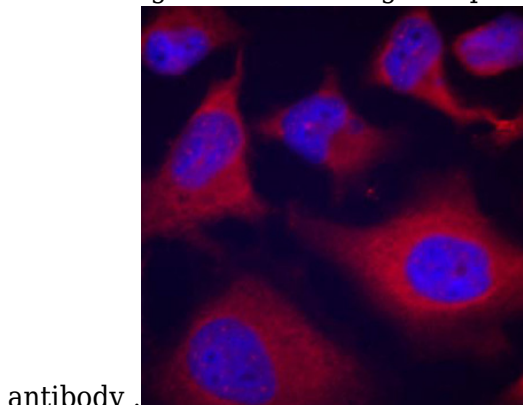
Western blot - Phospho-ADD1-S726 pAb

Western blot analysis of extracts from HeLa cells using Phospho-ADD1-S726 antibody. Secondary antibody: HRP Goat Anti-Rabbit IgG (H+L) at 1:10000 dilution. Lysates/proteins: 25ug per lane. Blocking buffer: 3% BSA.



Immunohistochemistry - Phospho-ADD1-S726 pAb

Immunohistochemistry of paraffin-embedded human lung carcinoma using Phospho-ADD1-S726



antibody .

Immunofluorescence - Phospho-ADD1-S726 pAb

Phospho-ADD1-S726 pAb



Catalog Number: 166358

Immunofluorescence analysis of methanol-fixed

HeLa cells using Phospho-ADD1-S726 antibody .