

# Human UBE2D1 (His Tag) recombinant protein



Catalog Number: 501358

## General Information

### Gene Name Synonym

Stimulator of Fe transport; UBC4/5 homolog; UbcH5; Ubiquitin carrier protein D1; Ubiquitin-conjugating enzyme E2(17)KB 1; Ubiquitin-conjugating enzyme E2-17 kDa 1; Ubiquitin-protein ligase D1

### Protein Construction

A DNA sequence encoding the human UBE2D1 (P51668) (Ala 2-Met 147) was expressed, with a polyhistidine tag at the N-terminus.

### Organism

Human

### Expression Host

E. coli

## QC Testing

### Purity

> 90 % as determined by SDS-PAGE

### Endotoxin

Please contact us for more information.

### Stability

Samples are stable for up to twelve months from date of receipt at -70°C

### Predicted N terminal

Met

### Molecular Mass

The recombinant human UBE2D1 consisting of 161 amino acids and has a calculated molecular mass of 18.3 kDa. It migrates as an approximately 16 kDa band in SDS-PAGE under reducing conditions.

### Formulation

Lyophilized from sterile 25mM Tris, 100mM NaCl, 20% glycerol, 0.05% Tween

1. 5 % trehalose and mannitol are added as protectants before lyophilization.

2. Please contact us for any concerns or special requirements.

## Usage Guide

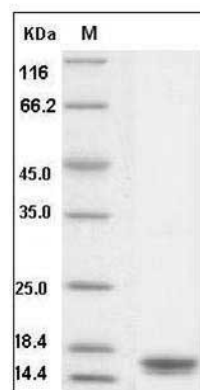
### Storage

Store it under sterile conditions at -20°C to -80°C. It is recommended that the protein be aliquoted for optimal storage. Avoid repeated freeze-thaw cycles.

### Reconstitution

Adding sterile water, prepare a stock solution of 0.25 mg/ml. Concentration is measured by UV-Vis.

### SDS-PAGE



Human UBE2D1 / UBC5 Protein (His Tag) SDS-PAGE