

# Anti-CXCL2/MIP-2 antibody



Catalog Number: 101358

## Product name

Anti-CXCL2/MIP-2 antibody

## Immunogen

[Human CXCL2/MIP-2 recombinant protein](#)

## Specificity

Human CXCL2 / MIP-2

## Antibody description

Rabbit polyclonal to CXCL2/MIP-2

## Preparation

Produced in rabbits immunized with purified, recombinant Human CXCL2 / MIP-2 (rh CXCL2 / MIP-2; NP\_002080.1; Ala35-Asn107). CXCL2 / MIP-2 specific IgG was purified by Human CXCL2 / MIP-2 affinity chromatography.

## Formulation

0.2  $\mu$ m filtered solution in PBS

## Storage

This antibody can be stored at 2°C-8°C for one month without detectable loss of activity. Antibody products are stable for twelve months from date of receipt when stored at -20°C to -80°C.

Preservative-Free.

Sodium azide is recommended to avoid contamination (final concentration 0.05%-0.1%). It is toxic to cells and should be disposed of properly. Avoid repeated freeze-thaw cycles.

## Clonality

Polyclonal

## Ig Type

Rabbit IgG

## Applications

ELISA, WB

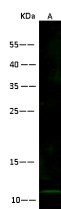
## Dilutions

WB: 10-30  $\mu$ g/ml

ELISA: 0.1-0.2  $\mu$ g/mL

This antibody can be used at 0.1-0.2  $\mu$ g/mL with the appropriate secondary reagents to detect Human CXCL2 / MIP-2. The detection limit for Human CXCL2 / MIP-2 is < 0.039 ng/well.

## Validations



Lanes	A
Items	
Sample (whole cell lysate)	Daudi
Sample Volume ( $\mu$ g/lane)	30
Gel	13% SDS-PAGE reducing gel
Recommended Concentration	10-30 $\mu$ g/ml
Secondary Antibody	Dylight 800-labeled Antibody to Rabbit IgG (H+L), at 1:5000 dilution.
Developed using Odyssey imaging system.	
Explanation	Predicted band size : 11 kDa Observed band size : 11 kDa

CXCL2 / MIP-2 Antibody, Rabbit PAb, Antigen Affinity Purified, Western blot