

# Anti-ENTPD5 antibody

Catalog Number: 100358

## Product name

Anti-ENTPD5 antibody

## Immunogen

[Human ENTPD5 \(His Tag\) recombinant protein](#)

## Specificity

Human ENTPD5

## Antibody description

Rabbit monoclonal to ENTPD5

## Preparation

This antibody was obtained from a rabbit immunized with purified, recombinant Human ENTPD5 (rh ENTPD5; O75356; Met1-His428).

## Formulation

0.2 µm filtered solution in PBS

## Storage

This antibody can be stored at 2°C-8°C for one month without detectable loss of activity. Antibody products are stable for twelve months from date of receipt when stored at -20°C to -80°C.

Preservative-Free.

Sodium azide is recommended to avoid contamination (final concentration 0.05%-0.1%). It is toxic to cells and should be disposed of properly. Avoid repeated freeze-thaw cycles.

## Clonality

Monoclonal

## Ig Type

Rabbit IgG

## Applications

WB, IHC-P, IP

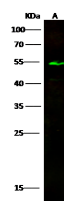
## Dilutions

WB: 10-20 µg/ml

IHC-P: 1-10 µg/mL

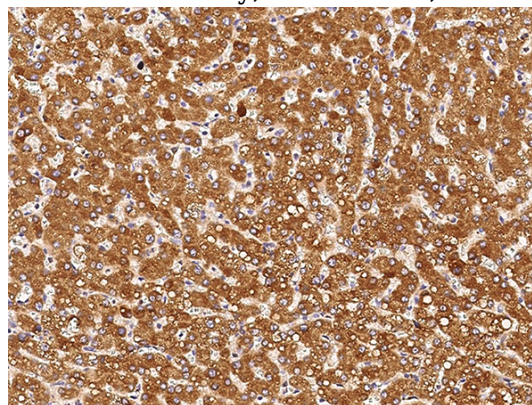
IP: 4-6 µg/mg of lysate

## Validations



Lanes	A
Sample (whole cell lysate)	HepG2
Sample Volume (µg/lane)	30
Gel	13% SDS-PAGE reducing gel
Recommended Concentration	10-20 µg/ml
Secondary Antibody	Dylight 800-labeled Antibody to Rabbit IgG (1:1), at 1:5000 dilution.
Explanation	Developed using Odyssey imaging system. Predicted band size : 47 kDa Observed band size : 53kDa

## ENTPD5 Antibody, Rabbit MAb, Western blot

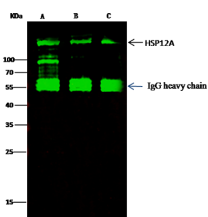


## ENTPD5 Antibody, Rabbit MAb, Immunohistochemistry

Immunochemical staining of human ENTPD5 in human liver with rabbit monoclonal antibody (5 µg/mL, formalin-fixed paraffin embedded

# Anti-ENTPD5 antibody

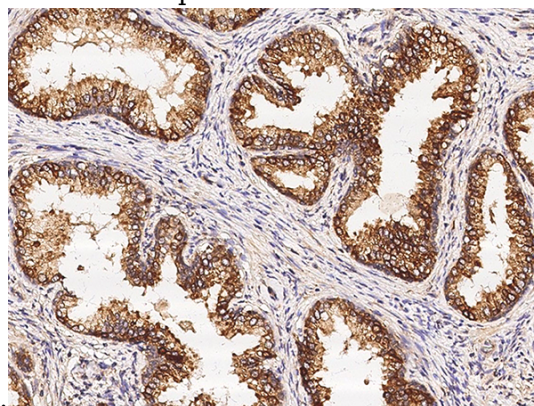
Catalog Number: 100358



Items	Lanes	A	B	C
Sample (whole cell lysate)		MCF7	293T	Hc1a
Sample quantity		0.5 mg		
IP antibody quantity		2 µg		
Protein G agarose		15 µl of 50% Protein G Agarose		
Gel		13% SDS-PAGE reductant gel		
Primary antibody		HSP12A antibody at 10 µg/ml [Cat# 11342-R201]		
Secondary antibody		DyLight 800-labeled antibody to rabbit IgG (H+L), at 1:5000 dilution.		

## ENTPD5 Antibody, Rabbit MAb, Immunohistochemistry

Immunochemical staining of human ENTPD5 in human kidney with rabbit monoclonal antibody (5 µg/mL, formalin-fixed paraffin embedded



sections).

## ENTPD5 Antibody, Rabbit MAb, Immunohistochemistry

Immunochemical staining of human ENTPD5 in human prostate with rabbit monoclonal antibody (5 µg/mL, formalin-fixed paraffin embedded sections).

sections).

## ENTPD5 Antibody, Rabbit MAb, Immunoprecipitation

