

Anti-HMGCL Rabbit antibody



Catalog Number: 168658

Product name

Anti-HMGCL Rabbit antibody

Specificity

Human

Antibody description

HMGCL Rabbit monoclonal antibody

Preparation

Antigen: A synthetic peptide of human HMGCL

Formulation

Supplied in 50nM Tris-Glycine(pH 7.4), 0.15M NaCl, 40%Glycerol, 0.01% sodium azide and 0.05% BSA.

Storage

Store at 4°C short term. Aliquot and store at -20°C long term. Avoid freeze / thaw cycle.

Clonality

Monoclonal

Ig Type

Rabbit IgG

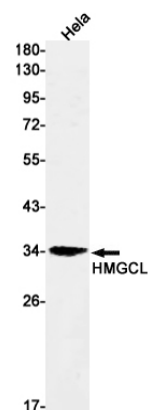
Applications

WB

Dilutions

WB: 1/1000

Validations



Western blot detection of HMGCL in HeLa cell lysates using HMGCL Rabbit mAb(1:1000 diluted).Predicted band size:34kDa.Observed band size:34kDa.