

Anti-PPC-DC / PPCDC antibody



Catalog Number: 106658

Product name

Anti-PPC-DC / PPCDC antibody

Immunogen

[Human PPC-DC / PPCDC \(His Tag\) recombinant protein](#)

Specificity

Human PPC-DC / PPCDC

Antibody description

Rabbit polyclonal to PPC-DC / PPCDC

Preparation

Produced in rabbits immunized with purified, recombinant Human PPC-DC / PPCDC (rh PPC-DC / PPCDC; AAH14409.1; Met1-Ser204). PPC-DC / PPCDC specific IgG was purified by Human PPC-DC / PPCDC affinity chromatography.

Formulation

0.2 µm filtered solution in PBS

Storage

This antibody can be stored at 2°C-8°C for one month without detectable loss of activity. Antibody products are stable for twelve months from date of receipt when stored at -20°C to -80°C.

Preservative-Free.

Sodium azide is recommended to avoid

contamination (final concentration 0.05%-0.1%). It is toxic to cells and should be disposed of properly. Avoid repeated freeze-thaw cycles.

Clonality

Polyclonal

Ig Type

Rabbit IgG

Applications

ELISA, IHC-P

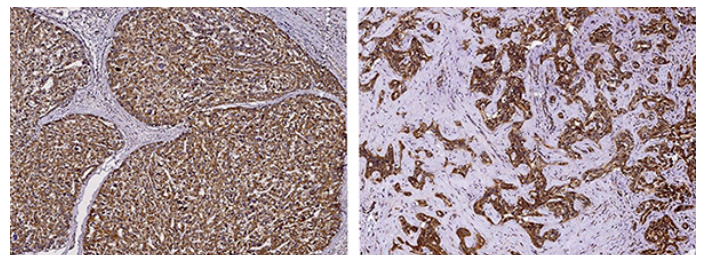
Dilutions

ELISA:0.1-0.2 µg/mL

This antibody can be used at 0.1-0.2 µg/mL with the appropriate secondary reagents to detect Human PPC-DC / PPCDC. The detection limit for Human PPC-DC / PPCDC is < 0.039 ng/well.

IHC-P: 0.1-2 µg/ml

Validations



PPC-DC / PPCDC Antibody, Rabbit PAb, Antigen Affinity Purified, Immunohistochemistry