

PDE1C antibody

Catalog Number: 113658

Product name

PDE1C antibody

Specificity

Human, Mouse, Rat; other species not tested.

Antibody description

PDE1C Rabbit Polyclonal antibody. Positive IP detected in mouse heart tissue. Positive WB detected in human heart tissue. Observed molecular weight by Western-blot: 68 kDa

Preparation

This antibody was obtained by immunization of PDE1C recombinant protein (Accession Number: NM_005020). Purification method: Antigen affinity purified.

Formulation

PBS with 0.02% sodium azide and 50% glycerol pH 7.3.

Storage

Store at -20°C. DO NOT ALIQUOT

Clonality

Polyclonal

Ig Type

Rabbit IgG

Applications

ELISA, WB, IP

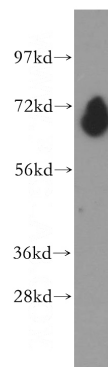
Dilutions

Recommended Dilution:

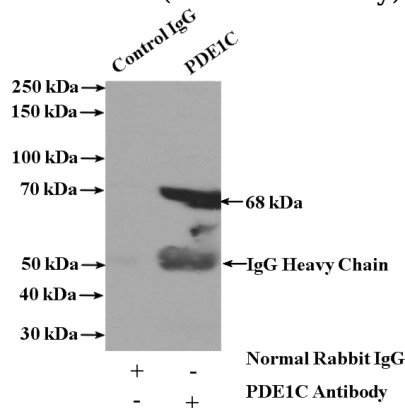
WB: 1:500-1:5000

IP: 1:200-1:2000

Validations



human heart tissue were subjected to SDS PAGE followed by western blot with Catalog No:113658(PDE1C antibody) at dilution of 1:500



IP Result of anti-PDE1C (IP:Catalog No:113658, 4ug; Detection:Catalog No:113658 1:500) with mouse heart tissue lysate 4000ug.