

# ARH3 antibody

Catalog Number: 108258

## Product name

ARH3 antibody

## Specificity

Human, Mouse, Rat; other species not tested.

## Antibody description

ARH3 Rabbit Polyclonal antibody. Positive IF detected in HepG2 cells. Positive IHC detected in human testis tissue, human brain tissue, human heart tissue, human kidney tissue, human liver tissue, human spleen tissue. Positive WB detected in HepG2 cells, HeLa cells, mouse brain tissue, mouse heart tissue, mouse kidney tissue, mouse lung tissue, mouse thymus tissue. Observed molecular weight by Western-blot: 39 kDa

## Preparation

This antibody was obtained by immunization of ARH3 recombinant protein (Accession Number: NM\_017825). Purification method: Antigen affinity purified.

## Formulation

PBS with 0.02% sodium azide and 50% glycerol pH 7.3.

## Storage

Store at -20°C. DO NOT ALIQUOT

## Clonality

Polyclonal

## Ig Type

Rabbit IgG

## Applications

ELISA, WB, IHC, IF

## Dilutions

Recommended Dilution:

WB: 1:500-1:5000

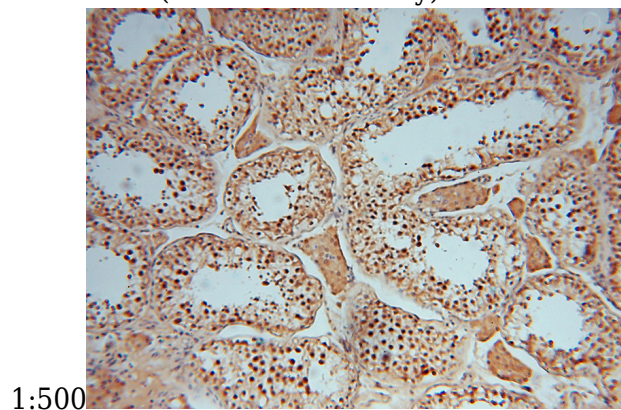
IHC: 1:20-1:200

IF: 1:20-1:200

## Validations



HepG2 cells were subjected to SDS PAGE followed by western blot with Catalog No:108258(ADPRHL2 antibody) at dilution of

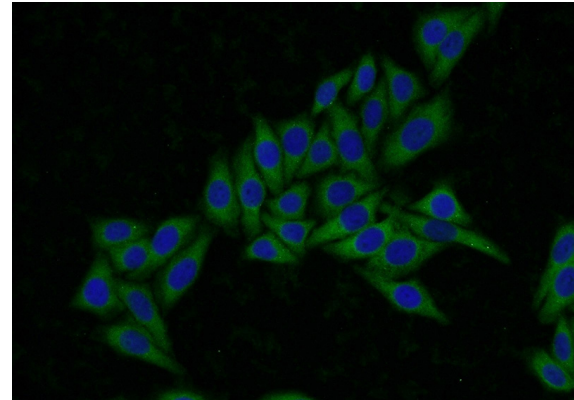
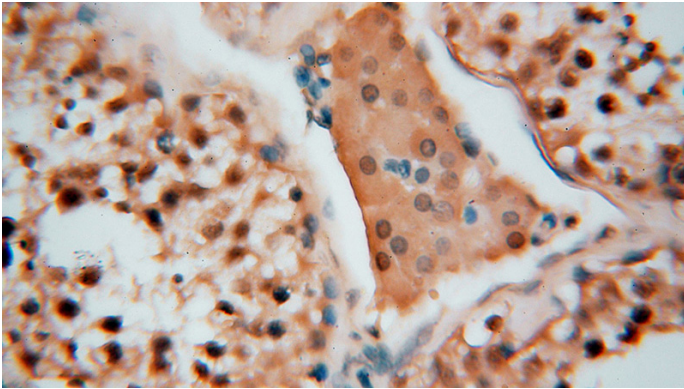


Immunohistochemical of paraffin-embedded human testis using Catalog No:108258(ADPRHL2 antibody) at dilution of 1:100 (under 10x lens)

# ARH3 antibody

Catalog Number: 108258

---



Immunohistochemical of paraffin-embedded human testis using Catalog No:108258(ADPRHL2 antibody) at dilution of 1:100 (under 40x lens)

Immunofluorescent analysis of HepG2 cells using Catalog No:108258(ADPRHL2 Antibody) at dilution of 1:50 and Alexa Fluor 488-conjugated AffiniPure Goat Anti-Rabbit IgG(H+L)