

Anti-CDK6 Rabbit antibody



Catalog Number: 167258

Product name

Anti-CDK6 Rabbit antibody

Specificity

Human

Antibody description

CDK6 Rabbit polyclonal antibody

Preparation

Antigen: A synthetic peptide of human Cdk6

Formulation

Supplied in 50nM Tris-Glycine(pH 7.4), 0.15M NaCl, 40%Glycerol, 0.01% sodium azide and 0.05% BSA.

Storage

Store at -20°C. Stable for 12 months from date of receipt.

Clonality

Polyclonal

Ig Type

Rabbit IgG

Applications

WB, ICC/IF, FC

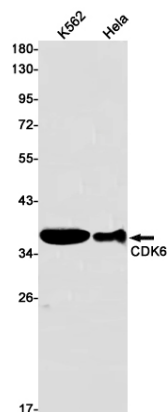
Dilutions

WB: 1/5000-1/10000

ICC/IF: 1/50

FC: 1/20-1/100

Validations



Western blot detection of CDK6 in K562, HeLa cell lysates using CDK6 Rabbit pAb(1:1000 diluted). Predicted band size: 37kDa. Observed band size: 37kDa.