

SKIV2L antibody

Catalog Number: 115258

Product name

SKIV2L antibody

Specificity

Human, Mouse, Rat; other species not tested.

Antibody description

SKIV2L Rabbit Polyclonal antibody. Positive IP detected in HepG2 cells. Positive WB detected in HEK-293 cells, COLO 320 cells, HepG2 cells, human kidney tissue, Jurkat cells. Observed molecular weight by Western-blot: 138kd

Preparation

This antibody was obtained by immunization of SKIV2L recombinant protein (Accession Number: NM_006929). Purification method: Antigen affinity purified.

Formulation

PBS with 0.1% sodium azide and 50% glycerol pH 7.3.

Storage

Store at -20°C. DO NOT ALIQUOT

Clonality

Polyclonal

Ig Type

Rabbit IgG

Applications

ELISA, WB, IP

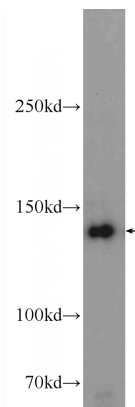
Dilutions

Recommended Dilution:

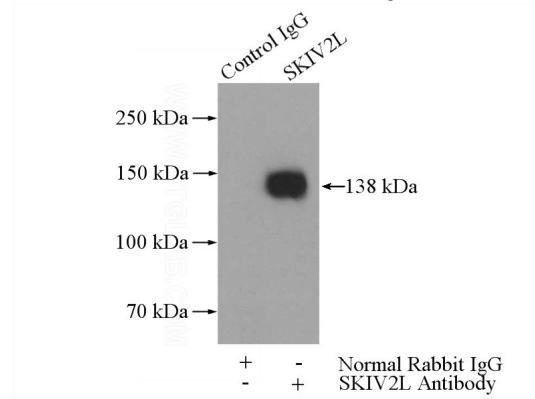
WB: 1:200-1:2000

IP: 1:200-1:2000

Validations



HEK-293 cells were subjected to SDS PAGE followed by western blot with Catalog No:115258(SKIV2L Antibody) at dilution of 1:600



IP Result of anti-SKIV2L (IP:Catalog No:115258, 4ug; Detection:Catalog No:115258 1:600) with HepG2 cells lysate 3200ug.